

MTRJ Field TV

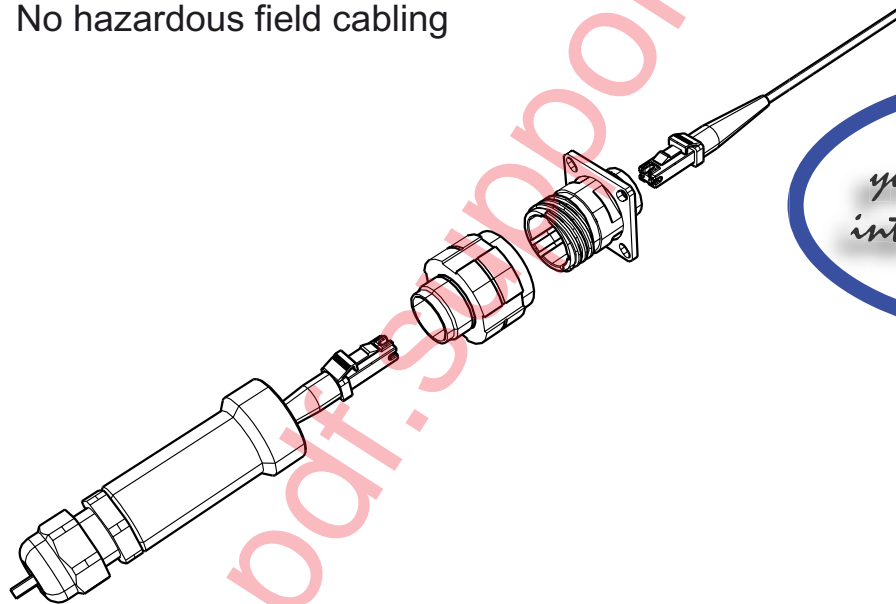
Ethernet Connection System For Harsh Environment

The MTRJ Field offers an easy system to upgrade from a standard to an environmental MTRJ.

- Sealed against fluids and dust (IP67)
- Shock, Vibration proof,
- No cabling operation in field and no tools required for installation

With the patented RJStop ® system you can use a standard MTRJ patchcord in a metallic plug which will protect it from shocks, dust and fluids.

No hazardous field cabling



This metallic plug is connected into a receptacle, using a Tri Start Thread coupling mechanism (MIL-DTL-38999 series III type) with anti-decoupling device for high vibrations.

Optical performance :

- Number of Channel : 1/2/4
- typical Insertion Loss : 0,5db in MM
- Durability 500 mating/unmating cycles (changes for <0,2 db



*Transform
your MTRJ patchcord
into an Environmental
Connector*

Applications

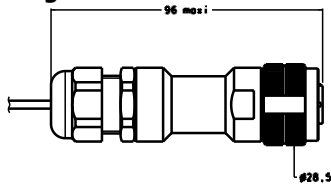
Data acquisition and transmission in Harsh Environment

- Railways
- Radars
- Shelters
- Battlefield Communication systems
- Navy

Amphenol
Socapex
Fibre Optic Business Division

MTRJ Field TV

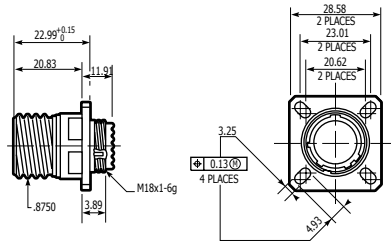
• Plug



• Square Flange Receptacle

Front Mount

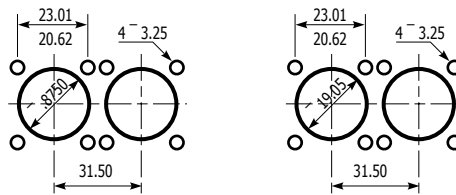
Rear Mount



Panel Drilling

Square flange receptacle rear panel mounting

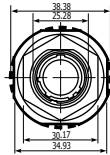
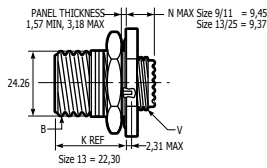
Square flange receptacle front panel mounting



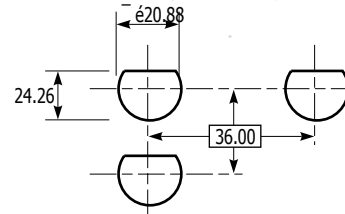
• Jam Nut Receptacle

Front Mount

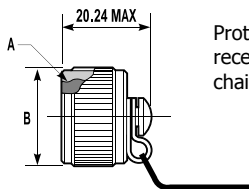
Rear Mount



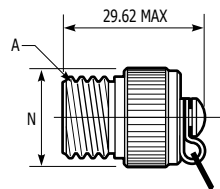
Panel Drilling
Jam nut receptacle rear panel mounting



• Protective caps



Protective cap for receptacles (metallic chain or nylon cord)



Protective cap for plug (metallic chain or nylon cord)

• How to order : MTRJ Field tv

Serie :	MTRJF TV	6M	C	G	N
MTRJ Field TV					
Shell type					
6	: Plug with metal backshell, plastic PG clamp				
6M	: Plug with metal backshell and PG clamp				
2	: Square flange receptacle				
2PE	: Sq. flange, metal backshell and plastic PG clamp				
2PEM	: Sq. flange, metal backshell and PG clamp				
7	: Jam nut receptacle				
7PE	: Jam nut, metal backshell and plastic PG clamp				
7PEM	: Jam nut, metal backshell and PG clamp				
Cable type					
C	: Ruggedized cable ! 2,8mm, 2 fibers 900µm				
D	: Duplex cable, 2 fibers ! 1,6mm				
S	: Scindex cable, 2 fibers ! 1,6mm				
Shell finish					
N	: Nickel plated				
G	: Olive drab cadmium plated				
B	: Bronze				
Polarization					
N	: Normal				
A / B / C / D / E					