

TD 54-661 Page 1

**Silicon Power Transistors
 JEDEC Types 2N1015,
 2N1016**

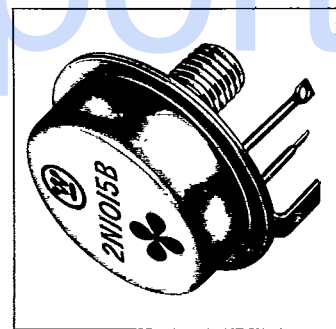
7.5 Amperes, 150 Watts
 Collector-to-Emitter Voltage 30 to 300
 Volts

Westinghouse



Application

The Westinghouse 2N1015 and 2N1016 series are NPN fused silicon power transistors. These transistors are rated at a maximum collector current of 7.5 amperes, the 2N1015 series having a minimum d-c gain of 10 at 2 amperes and the 2N1016 having a minimum d-c gain of 10 at 5 amperes. Exhibiting extremely low saturation resistance and characterized by excellent operating capabilities at True Voltage Ratings and high temperatures, these transistors provide a new degree of flexibility for circuit design. The silicon power transistor is hermetically sealed in a welded case and features an all-welded internal construction, thus assuring maximum reliability and long life. The mounting stud of the single-ended case style is designed for good thermal contact to an external heat sink as well as ease of installation. Specifically designed for high-power switching, voltage and current regulators, and amplifier application in industrial and military equipments, each transistor is 100



Thermal Characteristics

- *Thermal resistance, θ_{JC} , °C/watt, max. .07
- Derating factor, Watts/°C 1.43
- *Typical thermal drop, case to heat sink, °C/watt. 0.3

percent tested for electrical characteristics, and in addition, each production lot is further subjected to rigid environmental testing.

All of these transistors carry the Westinghouse Lifetime Guarantee.

Guarantee

Westinghouse warrants to the original purchaser that it will correct any defect or defects in workmanship, by repair or replacement f.o.b. factory, for any silicon power semiconductor bearing this symbol \oplus ™ during the life of the equipment in which it is originally installed, provided said device is used within manufacturer's published ratings and applied in accordance with good engineering practice. This warranty shall constitute a fulfillment of all Westinghouse liabilities in respect to said products. This warranty is exclusive and in lieu of all other warranties of quality, whether written, oral, or implied (including any warranty of merchantability or fitness for purpose). Westinghouse shall not be liable for any consequential damages.

PDF.Supp



① The maximum collector to emitter voltage rating is based on the maximum rated forward bias-base-emitter junction temperature. The maximum collector to emitter voltage rating is below the various "break-down" voltages, $V_{CE(sat)}$, $V_{CE(su)}$ and the $\alpha_{min}=1$ curve in the safe operating region, $V_{CE(su)}$. Each parameter is power tested within its maximum limits of V_{CE} , I_B and I_C . (see figures 3 and 4).

Maximum Ratings

Voltage

*Collector to emitter, V_{CE} , $V_{CE(su)}$	2N1015	2N1016	30
	2N1015A	2N1016A	60
	2N1015B	2N1016B	100
	2N1015C	2N1016C	150
	2N1015D	2N1016D	200
	2N1015E	2N1016E	250
	2N1015F	2N1016F	300
*Emitter to base, V_{EB} , $V_{EB(su)}$			25
Collector to base, V_{CB} , $V_{CB(su)}$			equal to rated V_{CE}

Current

*Collector current, I_C , $I_{C(sat)}$			7.5
*Base current, I_B , $I_{B(sat)}$			5.0
*Emitter current, I_E , $I_{E(sat)}$			7.5

Power

*Power dissipation, P_T at $T_C=45^\circ\text{C}$, watts, max.			150
---	--	--	-----

Temperature

*Junction temperature, T_J , $^\circ\text{C}$			+150
*Storage temperature, T_{stg} , $^\circ\text{C}$ min.			-65
max.			+150

Electrical Characteristics $T_C=25^\circ\text{C}$ unless otherwise specified

2N1015/2N1016

Collector current at $V_{CE}=V_{CE(sat)}$ (from max. ratings), $T_J=150^\circ\text{C}$, $V_{BE}=-1.5\text{ Vdc}$	I_{CEX}	..	2	*20	mA
Emitter current at $V_{BE}=25\text{ Vdc}$, $I_C=0$, $T_J=150^\circ\text{C}$	I_{EBO}	..	3	*20	mA
Switching time, delay plus rise time	t_d+t_r	..	3	μsec
Storage plus fall time	t_s+t_f	..	7	μsec
2N1015					
Saturation resistance at $I_C=2\text{ Adc}$, $I_B=300\text{ mA}$	$r_{CE(sat)}$..	0.25	* 0.75	ohms
Dc current gain at $V_{CE}=4\text{ Vdc}$, $I_C=2\text{ Adc}$	β_{FE}	*10	14
Base voltage, at $I_C=2\text{ Adc}$, $I_B=300\text{ mA}$	$V_{BE(sat)}$..	1.15	Vdc
Beta cut-off frequency	f_{β}	..	25	kHz
2N1016					
Saturation resistance at $I_C=5\text{ Adc}$, $I_B=750\text{ mA}$	$r_{CE(sat)}$..	0.12	* 0.5	ohms
Dc current gain at $V_{CE}=4\text{ Vdc}$, $I_C=5\text{ Adc}$	β_{FE}	*10	18
Base voltage, at $I_C=5\text{ Adc}$, $I_B=750\text{ mA}$	$V_{BE(sat)}$..	1.25	Vdc
Beta cut-off frequency	f_{β}	..	30	kHz

*JEDEC registered parameters.

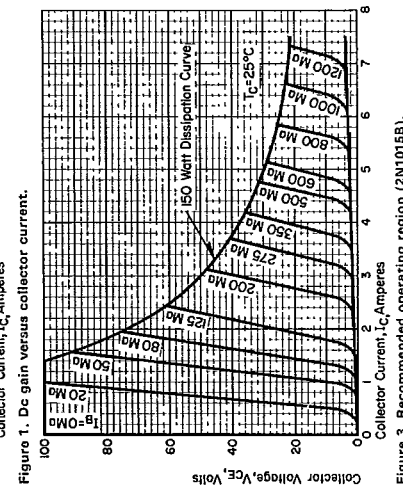
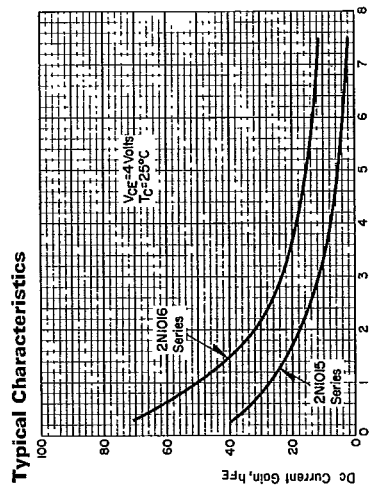
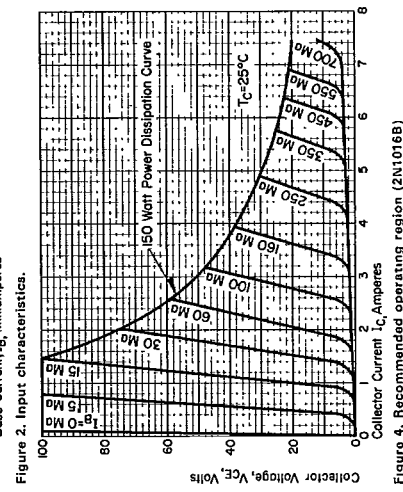
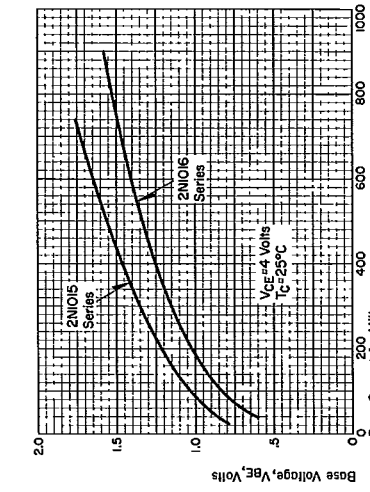
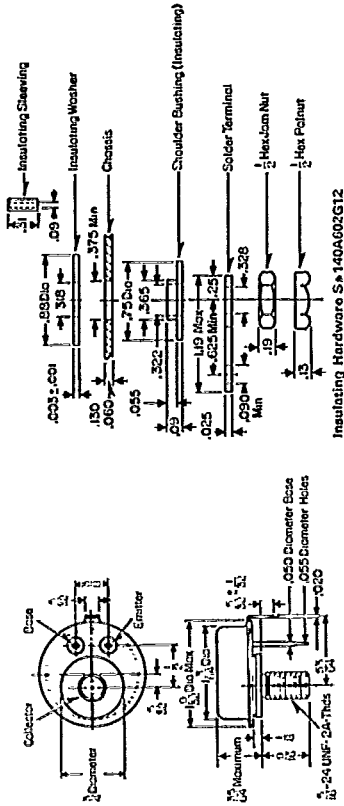


Figure 1. Dc gain versus collector current.

Figure 3. Recommended operating region (2N1015B).



Dimensions in Inches



February, 1967
 Supersedes TD 54-661, pages 1 and 2, dated
 August, 1963
 E. D. C/2116/DB; E. D. C/2117

Westinghouse Electric Corporation
 Semiconductor Division, Youngwood, Pa. 15697
 Printed in USA