

COLLECTOR CURRENT = 2 AMPS PNP TYPES

Device No	Case	VCBO Volts	VCEO (sus) Volts	VEBO Volts	hFE		VCE	IC	VCE (sat)	VBE (sat)	@ IC	@ IB	θ _{JC} °C/W	F _t MHz
					Min	Max								
2N3660	TO-5	40	30	5	25	100	10	.5	1.2	1.8	.5	.05	25	70
2N3661	TO-5	50	50	5	25	100	10	.5	1.2	1.8	.5	.05	25	70
2N3740	TO-66	60	60	7	30	100	1	.3	.6	1	1	.125	25	70
2N3741	TO-66	80	80	7	30	100	1	.3	.6	1	1	.125	25	70
2N3774	TO-5	40	40	8	20	60	2	.2	.2	1.2	.2	.02	25	70
2N3775	TO-5	60	60	8	20	60	2	.2	.2	1.2	.2	.02	25	70
2N3776	TO-5	80	80	8	20	60	2	.2	.2	1.2	.2	.02	25	70
2N3777	TO-5	100	100	8	20	60	2	.2	.2	1.2	.2	.02	25	70
2N3778	TO-5	40	40	8	10	40	2	.2	.2	1.2	.2	.04	25	70
2N3779	TO-5	60	60	8	10	40	2	.2	.2	1.2	.2	.04	25	70
2N3780	TO-5	80	80	8	10	40	2	.2	.2	1.2	.2	.04	25	70
2N3781	TO-5	100	100	8	10	40	2	.2	.2	1.2	.2	.04	25	70
2N3782	TO-5	40	40	8	10	40	3	1	.75	1.75	1	.2	25	70
2N4234	TO-5	40	40	7	30	150	1	.3	.6	1.5	1	.1	25	70
2N4235	TO-5	60	60	7	30	150	1	.3	.6	1.5	1	.1	25	70
2N4236	TO-5	80	80	7	30	150	1	.3	.6	1.5	1	.1	25	70
2N4387	TO-66	40	40	5	25	100	10	.5	3	4	1	.1	25	70
2N4388	TO-66	60	60	5	25	100	10	.5	3	4	1	.1	25	70
2N4898	TO-66	40	40	5	20	100	1	.5	1.3	1.3	1	.1	25	4
2N4899	TO-66	60	60	5	20	100	1	.5	1.3	1.3	1	.1	25	4
2N4900	TO-66	80	80	5	20	100	1	.5	1.3	1.3	1	.1	25	4
2N5344	TO-66	250	250	5	25	100	5	.5	3	1.5	1	.2	4.3	60
2N5345	TO-66	300	300	5	25	100	5	.5	3	1.5	1	.2	4.3	60
2N5679	TO-5	100	100	4	40	150	2	.3	.6	1	.2	.02	25	80
2N5680	TO-5	120	120	4	40	150	2	.3	.6	1	.2	.02	25	80
2N6211	TO-66	275	225	6	10	100	2	1	1.4	1.4	1	.125	5	20
2N6212	TO-66	350	300	6	10	100	3	1	1.6	1.4	1	.125	5	20
2N6213	TO-66	400	350	6	10	100	4	1	2	1.4	1	.125	5	20
2N6214	TO-66	450	400	6	10	100	5	1	2.5	1.4	1	.125	5	20

COLLECTOR CURRENT = 3 AMPS NPN TYPES

Device No	Case	VCBO Volts	VCEO (sus) Volts	VEBO Volts	hFE		VCE	IC	VCE (sat)	VBE (sat)	@ IC	@ IB	θ _{JC} °C/W	F _t MHz
					Min	Max								
2N3738	TO-66	250	225	6	40	200	10	.1	2.5	1.2	.25	.025	7.5	10
2N3739	TO-66	325	300	6	40	200	10	.1	2.5	1.2	.25	.025	7.5	10
2N4075	TO-111/1	100	80	5	30	90	2	1	1	1.4	2	.2	5.83	30
2N4076	TO-111/1	100	80	5	50	150	2	1	1	1.4	2	.2	5.83	30
2N5334	TO-5	60	60	8	30	150	2	1	.7	1.5	2	.2	29	40
2N5335	TO-5	80	80	8	30	150	2	1	.7	1.5	2	.2	29	40
2N5784	TO-5	80	65	5.5	20	100	2	1	.5	1.5	1	.1	17.5	10
2N5785	TO-5	65	50	5.5	20	100	2	1.2	.75	1.5	1.2	.12	17.5	10

COLLECTOR CURRENT = 4 AMPS NPN TYPES

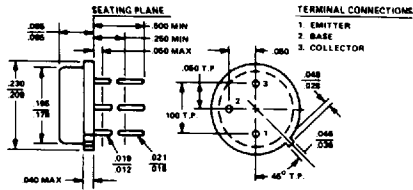
Device No	Case	VCBO Volts	VCEO (sus) Volts	VEBO Volts	hFE		VCE	IC	VCE (sat)	VBE (sat)	@ IC	@ IB	θ _{JC} °C/W	F _t MHz
					Min	Max								
2N4877	TO-5	70	60	5	20	100	2	4	1	1.8	4	.4	18	30
2N5320	TO-5	100	75	7	30	130	4	.5	.5	1.1	.5	.05	17.5	50
2N5321	TO-5	75	50	7	40	250	4	.5	.8	1.4	.5	.05	17.5	50

COLLECTOR CURRENT = 4 AMPS PNP TYPES

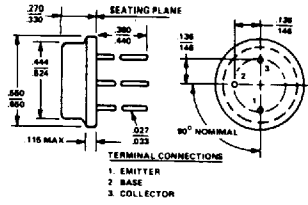
Device No	Case	VCBO Volts	VCEO (sus) Volts	VEBO Volts	hFE		VCE	IC	VCE (sat)	VBE (sat)	@ IC	@ IB	θ _{JC} °C/W	F _t MHz
					Min	Max								
2N5322	TO-5	100	75	5	30	130	4	.5	.7	1.1	.5	.05	17.5	50
2N5323	TO-5	75	50	5	40	250	4	.5	1.2	1.4	.5	.05	17.5	50
2N6500	TO-66	120	90	7	15	60	2	3	1.5	2.5	3	.3	1.9	60

PHYSICAL DIMENSIONS - PACKAGES

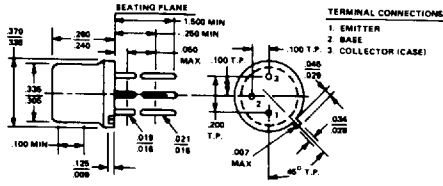
TO-46



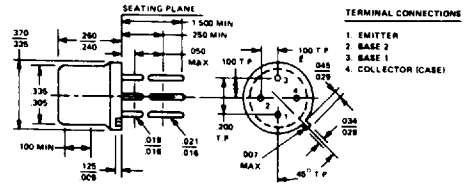
TO-8



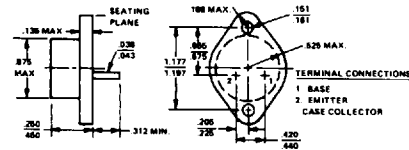
TO-5



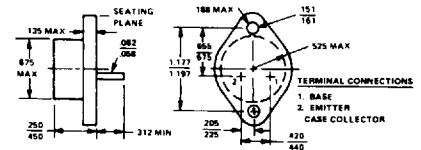
TO-33



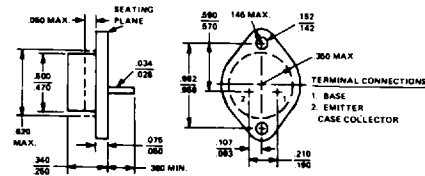
TO-3



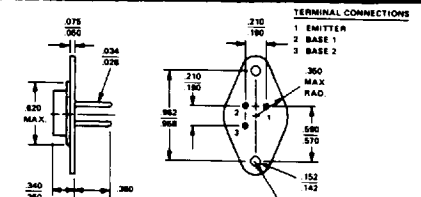
TO-3 (60 mil pins)



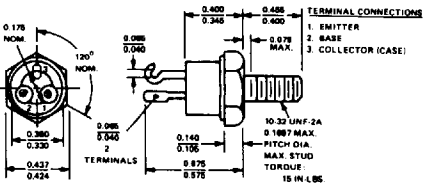
TO-66



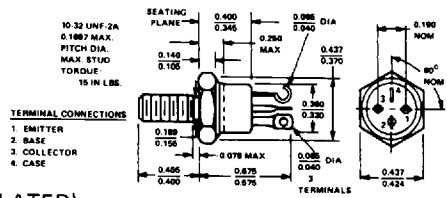
3 PIN TO-66



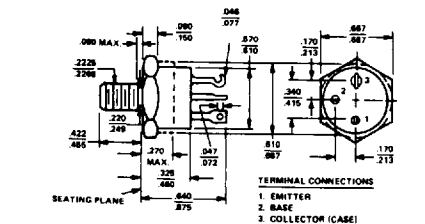
TO-111



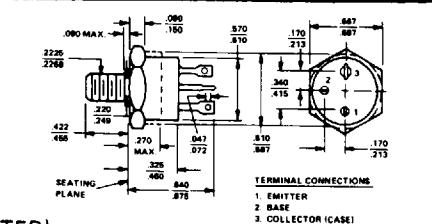
TO-111 (ISOLATED)



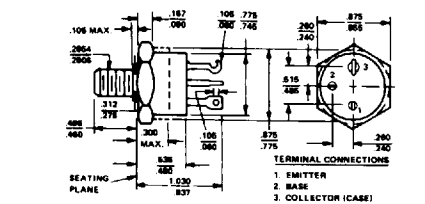
TO-61



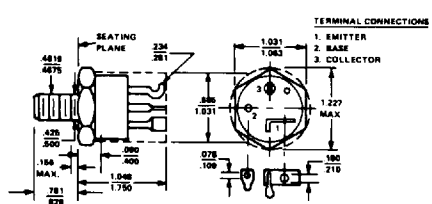
TO-61 (ISOLATED)



TO-63



TO-114



ALL DIMENSIONS IN INCHES