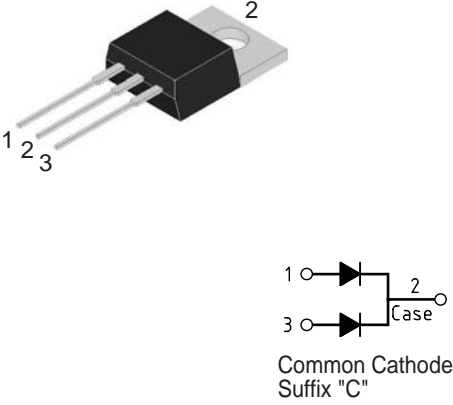


15.0 Amp. Schottky Barrier Rectifier

<p style="font-size: 1.2em; font-weight: bold;">TO-220AB</p> 	<p>Voltage 45 to 150 V</p> <p>Current 15.0 A</p> <ul style="list-style-type: none"> Plastic material used carries Underwriters Laboratory Classifications 94V-0 Metal silicon junction, majority carrier conduction Low power loss, high efficiency. High current capability, low forward voltage drop High surge capability For use in low voltage, high frequency inverters, free wheeling, and polarity protection applications Guardring for overvoltage protection High temperature soldering guaranteed: 260°C/10 seconds, 6.35mm from case <p>Mechanical Data</p> <ul style="list-style-type: none"> Cases: JEDEC TO-220AB molded plastic body Terminals: Pure tin plated, lead free, solderable per MIL-STD-750, Method 2026 Polarity: As marked Mounting position: Any Mounting torque: 5 in. - lbs. max Weight: 2.24 grams
--	---

Absolute Maximum Ratings, according to IEC publication No. 134

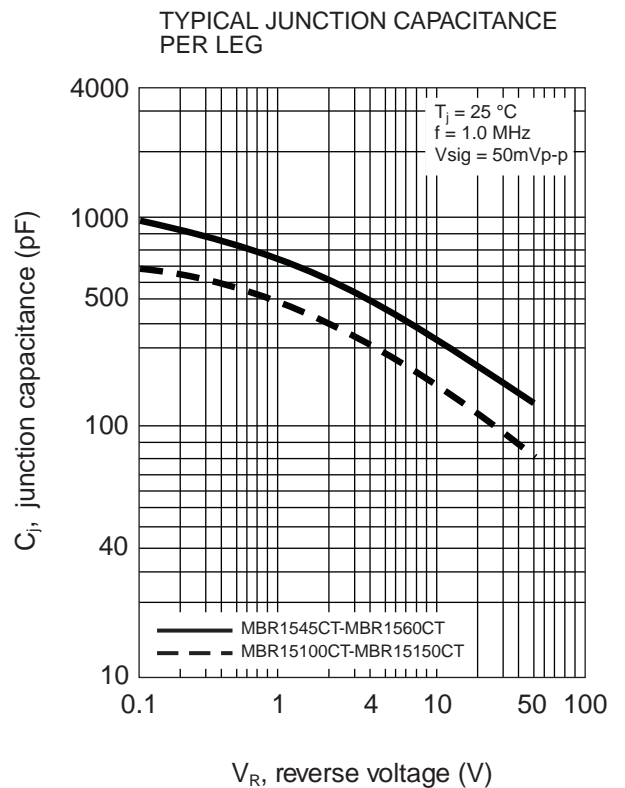
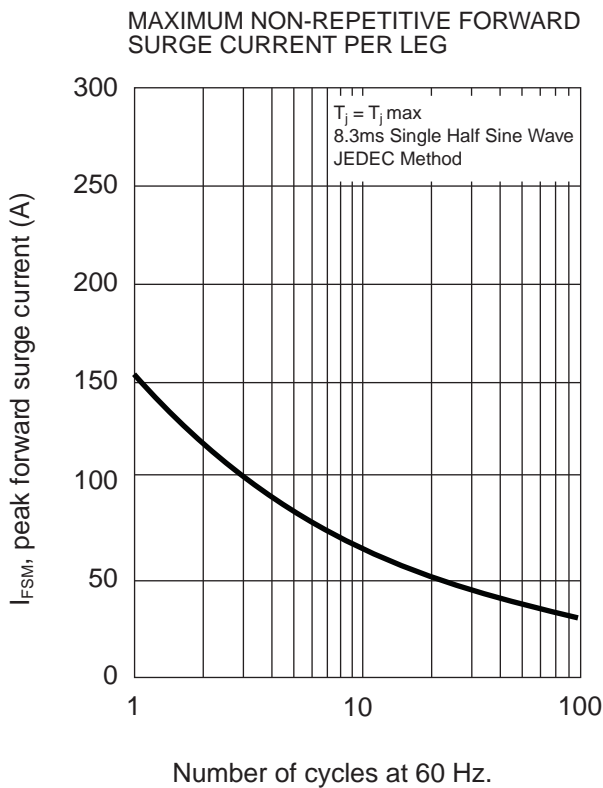
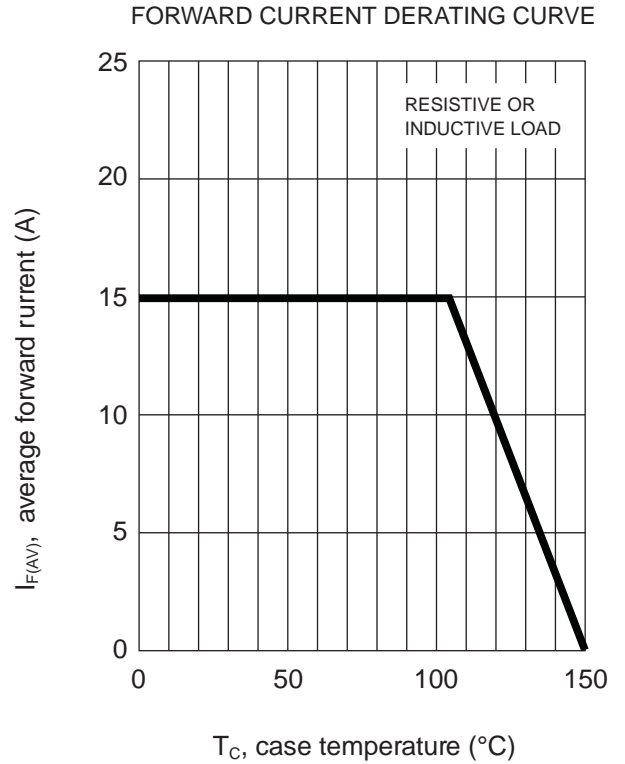
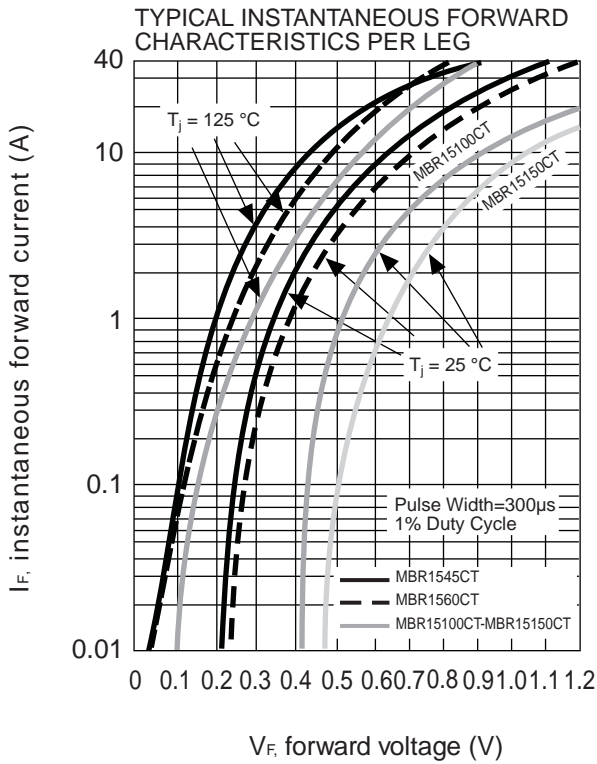
		MBR 1545CT	MBR 1560CT	MBR 15100CT	MBR 15150CT
V _{RRM}	Maximum Recurrent Peak Reverse Voltage (V)	45	60	100	150
V _{RMS}	Maximum RMS Voltage (V)	31	42	70	105
V _{DC}	Maximum DC blocking voltage (V)	45	60	100	150
I _{F(AV)}	Maximum Average Forward Rectified Current at T _C = 105 °C	15 A			
I _{FSM}	Peak Forward Surge Current, 8.3 ms Single Half Sine-wave Superimposed on Rated Load (JEDEC Method)	150 A			
I _{RRM}	Peak Repetitive Reverse Surge Current (Note 1)	1.0 A	0.5 A		
C _j	Typical Junction Capacitance	400 pF		200 pF	
T _j	Operating Junction Temperature Range	- 65 to + 150 °C			
T _{stg}	Storage Temperature Range	- 65 to + 175 °C			

Electrical Characteristics

		MBR 1545CT	MBR 1560CT	MBR 15100CT	MBR 15150CT
V _F	Maximum Instantaneous Forward Voltage at (Note 2) I _F = 7.5 A, T _c = 25 °C I _F = 7.5 A, T _c = 125 °C I _F = 15 A, T _c = 25 °C I _F = 15 A, T _c = 125 °C	0.57 V	0.75 V	0.92 V	1.05 V
		0.84 V	0.65 V	0.82 V	0.92 V
		0.72 V	-	-	-
		-	-	-	-
		-	-	-	-
I _R	Max. Instantaneous Reverse Current @ T _C =25°C at Rated DC Blocking Voltage (Note 2) @ T _C =125°C	0.5 mA	0.3 mA	0.1 mA	
		10 mA	7.5 mA	5.0 mA	
R _{thj-a} R _{thj-c}	Maximum Typical Thermal Resistance (Note 3)	10 °C/W 1.5 °C/W			

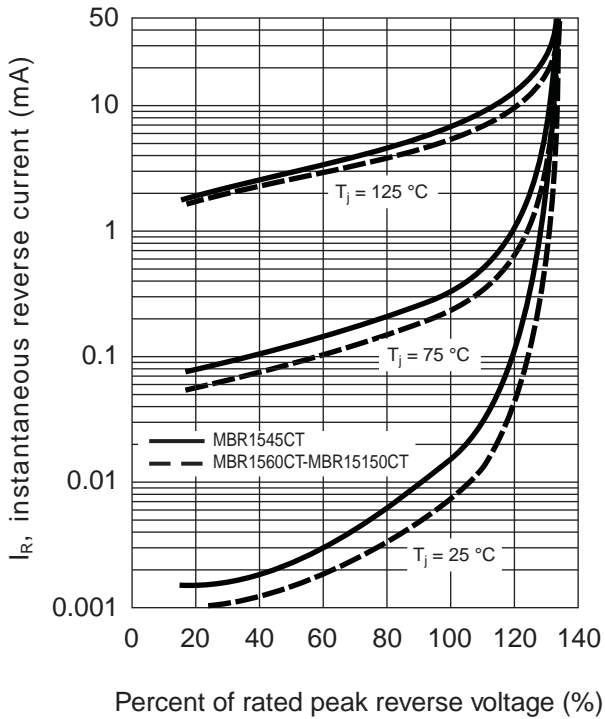
Notes: 1. 2.0µs Pulse Width, f=1.0 KHz
 2. Pulse Test: 300µs Pulse Width, 1% Duty Cycle
 3. Mount on Heatsink Size of 50.4 mm x 76.2 mm x 6.35 mm Al-Plate.

Rating And Characteristic Curves

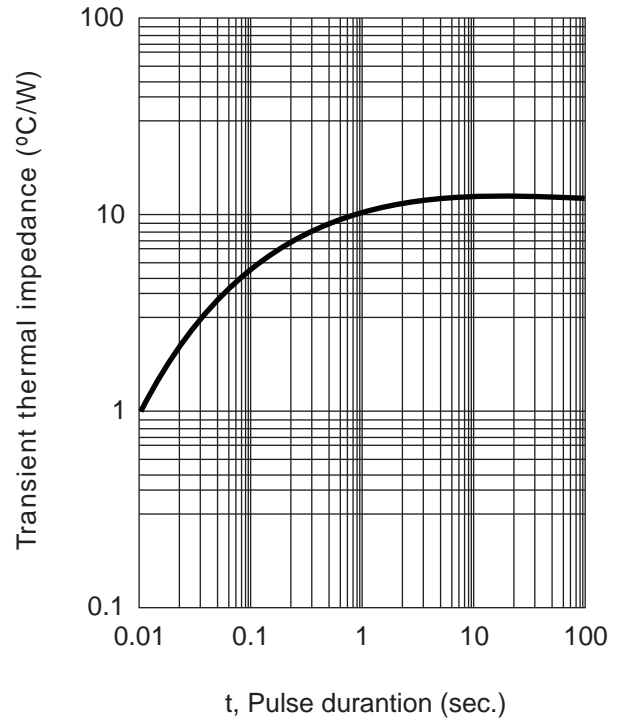


Rating And Characteristic Curves

TYPICAL REVERSE CHARACTERISTIC PER LEG

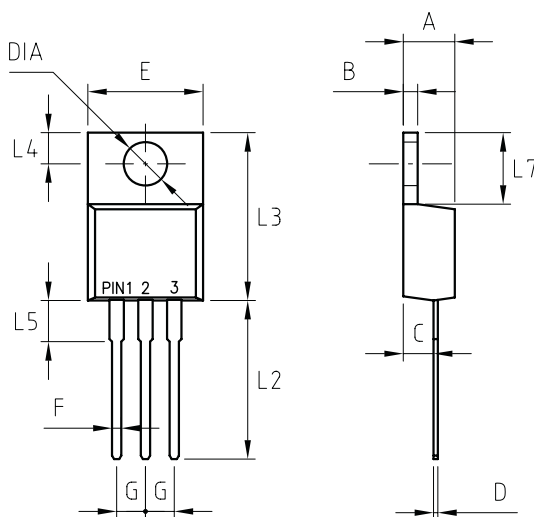


TYPICAL TRANSIENT THERMAL CHARACTERISTICS PER LEG



PACKAGE MECHANICAL DATA

TO-220AB



REF.	DIMENSIONS	
	Milimeters	
	Min.	Max.
A	4.44	4.70
B	1.14	1.40
C	2.54	2.79
D	0.35	0.64
E	--	10.5
F	0.68	0.94
G	2.41	2.67
L2	13.46	14.22
L3	14.90	15.10
L4	2.62	2.87
L5	3.56	4.06
L7	5.84	6.86
DIA	3.91	3.74