

SPECIFICATIONS

Header Connector

HM46 Series
Vertical, T/H Type
Plug
3.0mm [.118"] Pitch

Mechanical

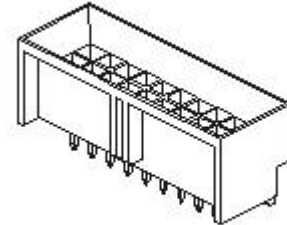
Contact Retention Force: 0.91Kgf Min.

Electrical

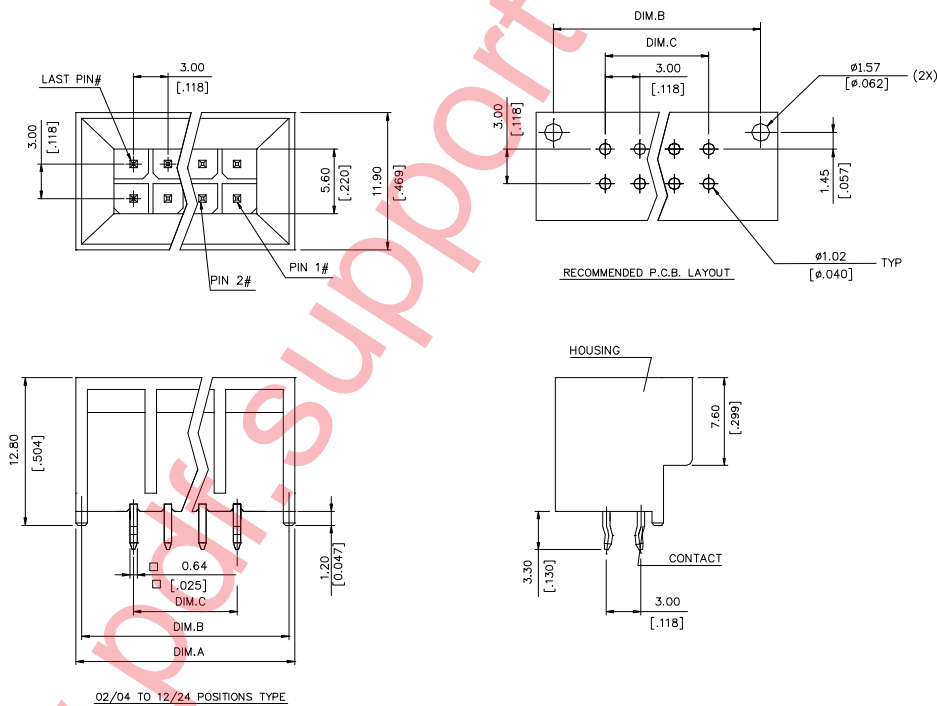
Voltage Rating: 250V
Current Rating: 5A per pin
Dielectric Withstanding Voltage: 1500 VAC
Insulation Resistance: 1000MΩ min.

Physical

Housing: Thermoplastic, UL 94V-0 Rating in Black Color
Contact: Brass
Plating: See "ORDERING INFORMATION"
Operating Temperature: -40°C to +105°C



DRAWING



ORDERING INFORMATION

PRODUCT No. : H M 4 6 ** * - *

Header _____
 Power Header _____
 No. Of Row _____
 4=2 Rows
 Mouting End Type _____
 6 = T/H, Vertical,
 Blind Mate Type

Mouting Type _____
 K: All The Pins Should Be Kinked If The
 Pins No. Is 02/04 Or 03/06.
 The First&The Last Pair Of Pins Should
 Be Kinked If The Pins No. Beyond 03/06.

Contact Area Plating _____
 E= Tin Plating Over Nickel With RoHS compliance

No. Of Post _____
 01 = 01/02 POS.
 02 = 02/04 POS.
 :
 12 = 12/24 POS.

HM4612*-*	43.00 [1.692]	42.00 [1.652]	33.00 [1.298]
HM4611*-*	40.00 [1.574]	39.00 [1.534]	30.00 [1.180]
HM4610*-*	37.00 [1.456]	36.00 [1.416]	27.00 [1.062]
HM4609*-*	34.00 [1.338]	33.00 [1.298]	24.00 [.944]
HM4608*-*	31.00 [1.220]	30.00 [1.180]	21.00 [.826]
HM4607*-*	28.00 [1.102]	27.00 [1.062]	18.00 [.708]
HM4606*-*	25.00 [.984]	24.00 [.944]	15.00 [.590]
HM4605*-*	22.00 [.866]	21.00 [.826]	12.00 [.472]
HM4604*-*	19.00 [.748]	18.00 [.708]	9.00 [.354]
HM4603*-*	16.00 [.630]	15.00 [.590]	6.00 [.236]
HM4602*-*	13.00 [.512]	12.00 [.472]	3.00 [.118]
P/N	DIM.A	DIM.B	DIM.C