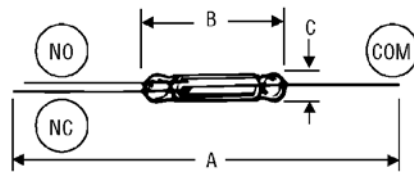
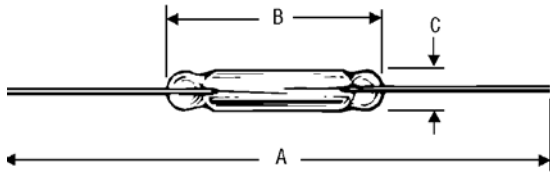




Reed Switches



Highest quality reed switches feature contacts hermetically sealed in a protective atmosphere. Protected contacts mean reliable operation in wet, oily, dirty — even explosive — environments. Glass capsule size ranges from a compact 2-inch glass length down to under 1/4-inch long! Ideal for use in proximity switches, flow meters, counting devices, limit switches, reed relays and precision instrumentation.

Actuate Time: 3 millisecond or less on 2-inch capsules; 1 millisecond or less on capsules under 1-inch in length. Typical Life Expectancy: 50 million operations. Contacts: Form A (SPST-N.O.) or Form C (SPDT), may be actuated by permanent magnet or coil. Magnets and coils sold below. Average Shipping Weight: 1 ounce each.

Microminiature Reed Switches

Table with columns: Stock No., Mfr.'s Type\*, Form†, Dimensions (In.) (A, B, C), Max. DC Contact Ratings Watts, Max. Amps, Max. DC Volts, Min. VDC Breakdown, Stock Ampere Turn Pull-in, Actuating Magnet, Test Coil, and EACH (1-24, 25-49).

Miniature Reed Switches

Table with columns: Stock No., Mfr.'s Type\*, Form†, Dimensions (In.) (A, B, C), Max. DC Contact Ratings Watts, Max. Amps, Max. DC Volts, Min. VDC Breakdown, Stock Ampere Turn Pull-in, Actuating Magnet, Test Coil, and EACH (1-24, 25-49).

Standard Reed Switches

Table with columns: Stock No., Mfr.'s Type\*, Form†, Dimensions (In.) (A, B, C), Max. DC Contact Ratings Watts, Max. Amps, Max. DC Volts, Min. VDC Breakdown, Stock Ampere Turn Pull-in, Actuating Magnet, Test Coil, and EACH (1-24, 25-49).

High Voltage and High Power Reed Switches

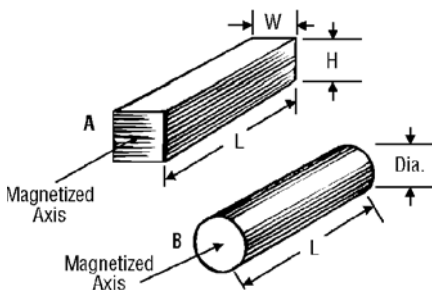
Table with columns: Stock No., Mfr.'s Type\*, Form†, Dimensions (In.) (A, B, C), Max. DC Contact Ratings Watts, Max. Amps, Max. DC Volts, Min. VDC Breakdown, Stock Ampere Turn Pull-in, Actuating Magnet, Test Coil, and EACH (1-24, 25-49).

\*R — Rhodium contacts; D — Durel contacts; W — Tungsten contacts; T — Tin-plated external leads; K — 10,000 volts (last 2 letters in Mfr.'s Type). †Form A — SPST; Form C — SPDT.

Reed Switch Test Coils

The coils described below are used for testing magnetic characteristics of reed switches. Pull-In, Drop-Out, Operate Time, Bounce Time, and Release Time are typical parameters measured using one of these coils. Coil specifications reference EIA/NARM RS 421-A for dry reed switches. MIL Spec MIL-S-55433.

Table with columns: Stock No., Mfr.'s Type, NARM RS-421 Coil #, MIL-S-55433 Coil #, No. of Turns, Approx. Coil Ohms, Bobbin Dimensions Length x I.D. x O.D., Recommended (Max. Current, Max. Voltage), and EACH (1-24, 25-49).



Actuating Magnets

The quality magnets below are available for operation of our dry reed switches. They feature temperature stable Alnico V material magnetized lengthwise for strong consistent operation. The variety of sizes enables you to match your proximity or motion application to our switch and magnet with ease and satisfaction.

Table with columns: Stock No., Mfr.'s Type, Fig., Size Inches, and EACH (1-24, 25-49).