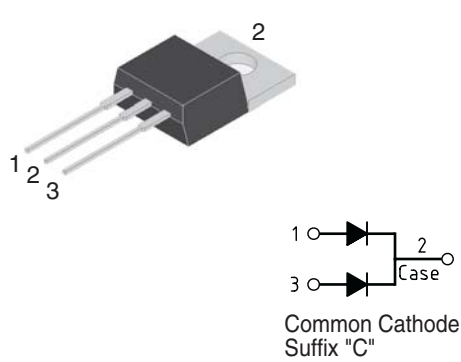


10 Amp. Schottky Barrier Rectifier

<p>TO-220AB</p>  <p style="font-size: small;">Common Cathode Suffix "C"</p>	<table style="width: 100%; border-collapse: collapse;"> <tr> <td style="width: 50%;">Voltage 45 to 200 V</td> <td style="width: 50%;">Current 10 A</td> </tr> </table> <ul style="list-style-type: none"> Metal silicon junction, majority carrier conduction High current capability The plastic material U/L recognition 94 V-0 Terminals: Leads solderable per MIL-STD202 Low forward Voltage drop 	Voltage 45 to 200 V	Current 10 A
Voltage 45 to 200 V	Current 10 A		

Absolute Maximum Ratings, according to IEC publication No. 134

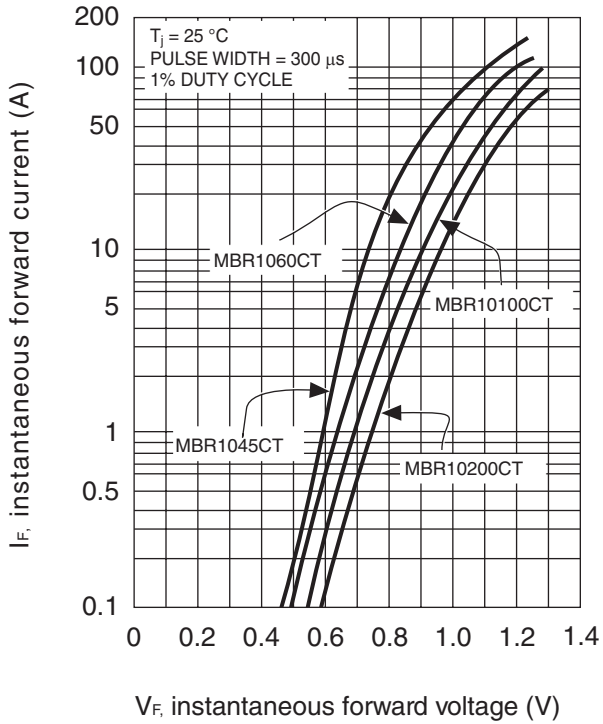
		MBR1045CT	MBR1060CT	MBR10100CT	MBR10200CT
V_{RRM}	Peak recurrent reverse voltage (V)	45	60	100	200
V_{RMS}	Maximum RMS voltage (V)	31	42	70	140
V_{DC}	Maximum DC blocking voltage (V)	45	60	100	200
$I_{F(AV)}$	Maximum average Forward current at $T_C = 125\text{ }^\circ\text{C}$ (both diodes conducting)	10 A			
I_{FSM}	8.3 ms. peak forward surge current (Jedec Method)	120 A			
I_{RRM}	Peak repetitive reverse surge current	1.0 A			0.5 A
T_j	Operating temperature range	- 65 to + 150 °C			
T_{stg}	Storage temperature range	- 65 to + 175 °C			

Electrical Characteristics

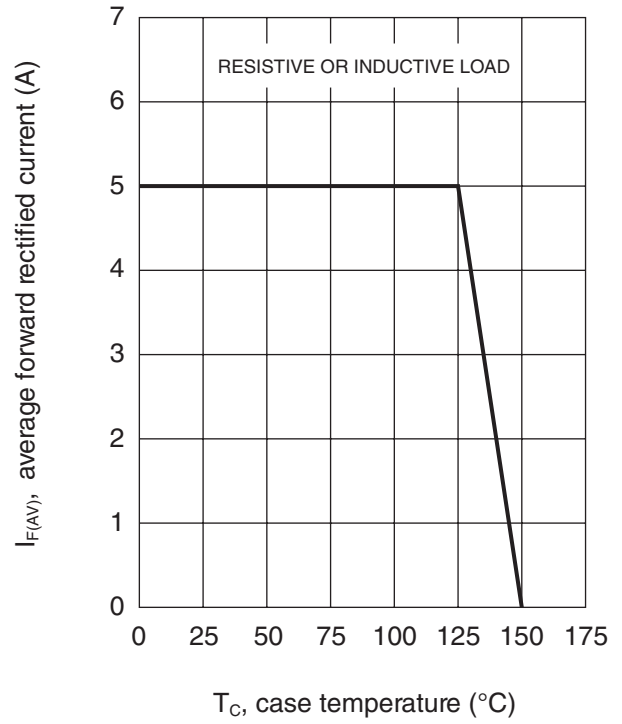
			MBR1045CT	MBR1060CT	MBR10100CT	MBR10200CT
V_F	Max. forward voltage drop at $I_F = 5\text{ A}$	$T_j = 25\text{ }^\circ\text{C}$	0.70 V	0.80 V	0.85 V	0.88 V
		$T_j = 125\text{ }^\circ\text{C}$	0.57 V	0.65 V	0.75 V	0.78 V
I_R	Max. Instantaneous reverse current at $V_R = V_{RRMax}$	$T_j = 25\text{ }^\circ\text{C}$	0.10 mA			
R_{thj-c}	Typical Thermal Resistance		1.5 °C/W			

10 Amp. Schottky Barrier Rectifier

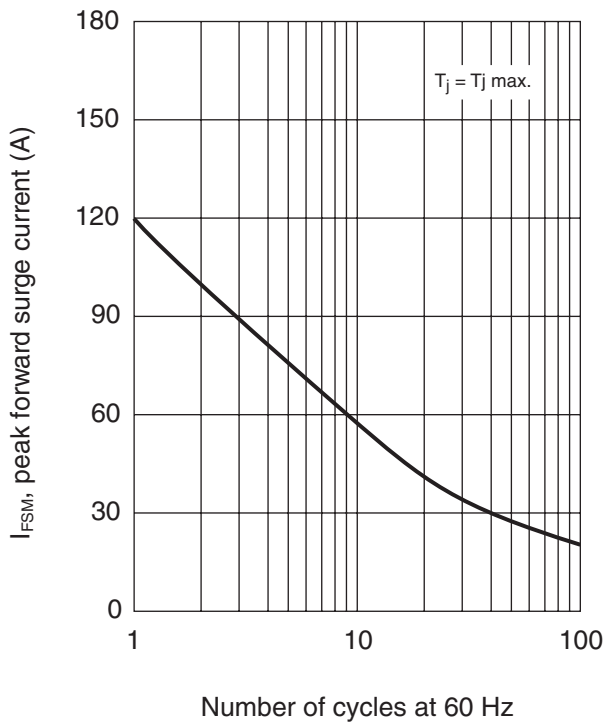
TYPICAL FORWARD CHARACTERISTIC



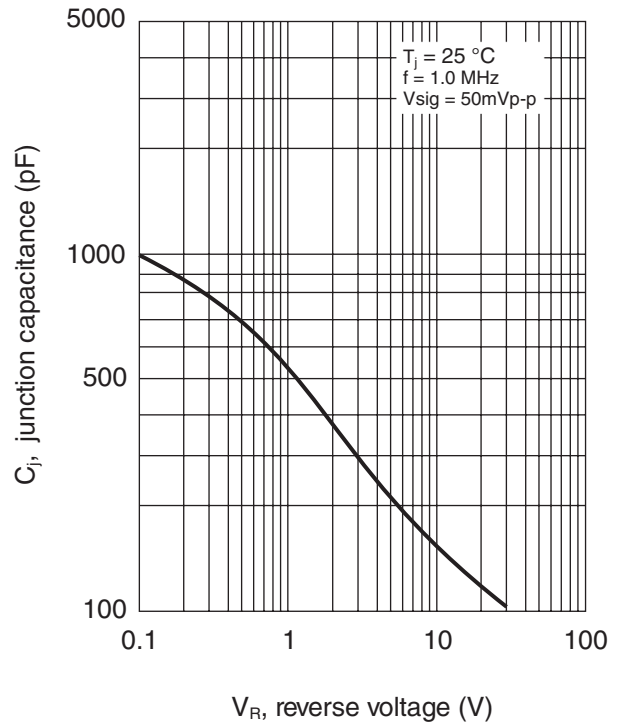
FORWARD CURRENT DERATING CURVE



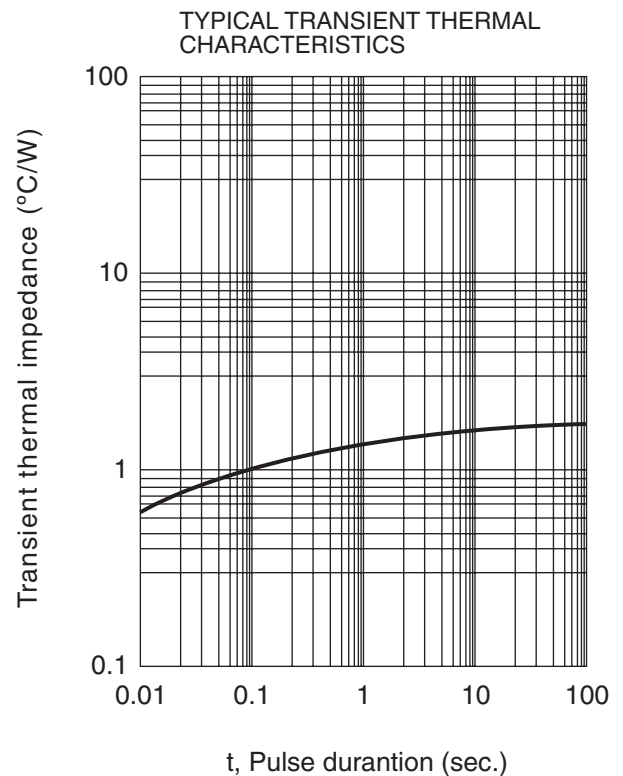
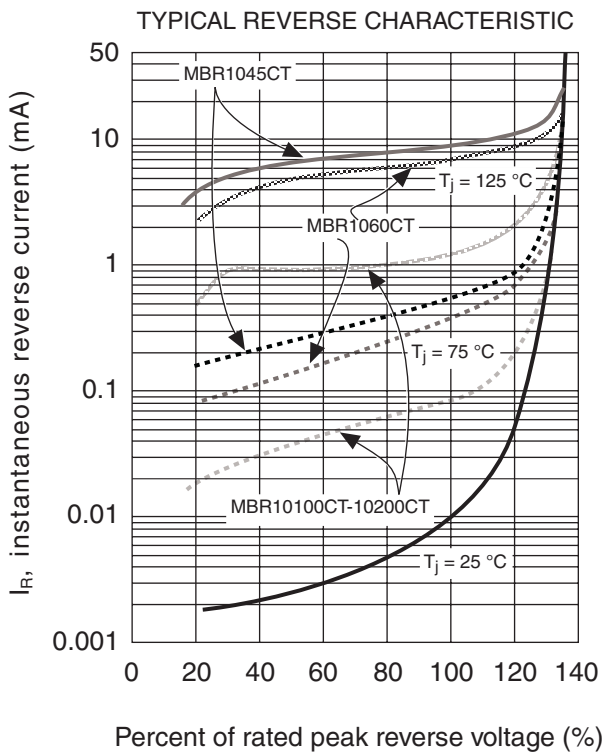
MAXIMUM NON-REPETITIVE PEAK FORWARD SURGE CURRENT



TYPICAL JUNCTION CAPACITANCE

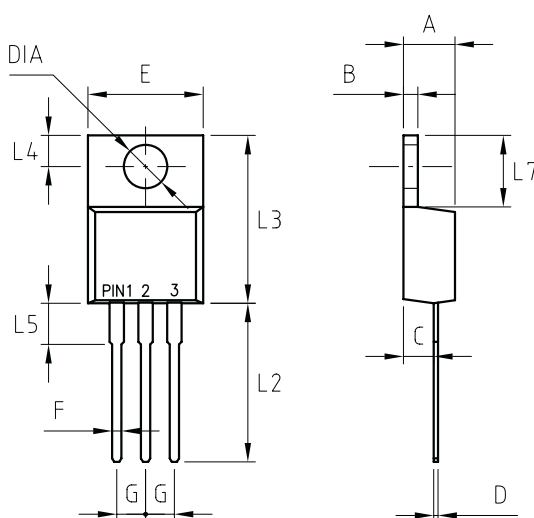


10 Amp. Schottky Barrier Rectifier



PACKAGE MECHANICAL DATA

TO-220AB



REF.	DIMENSIONS	
	Millimeters	
	Min.	Max.
A	4.44	4.70
B	1.14	1.40
C	2.54	2.79
D	0.35	0.64
E	--	10.5
F	0.68	0.94
G	2.41	2.67
L2	13.46	14.22
L3	14.90	15.10
L4	2.62	2.87
L5	3.56	4.06
L7	5.84	6.86
DIA	3.74	3.91