

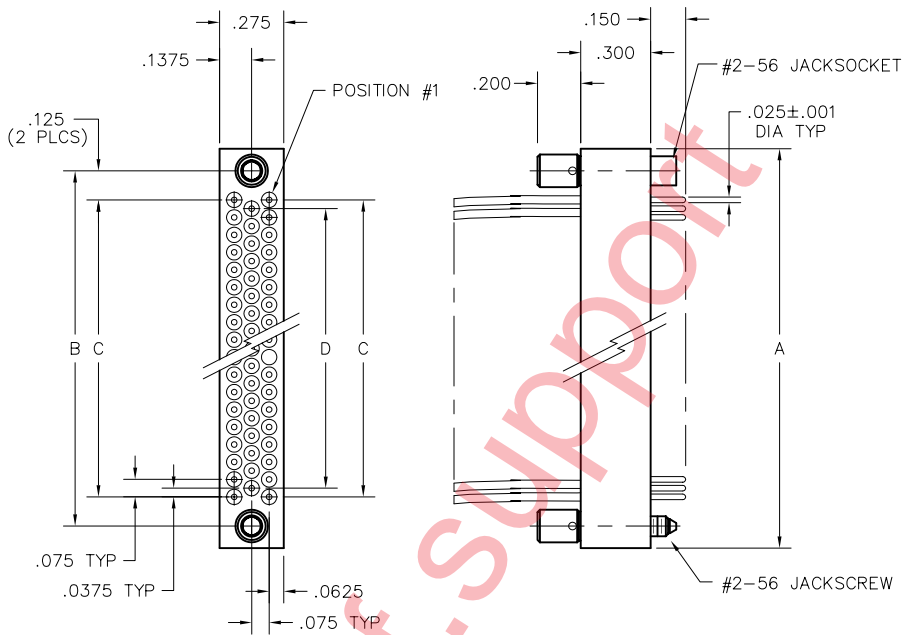
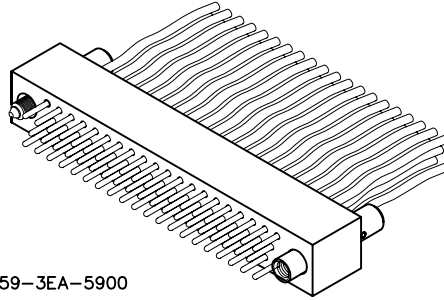
3 • ROW Crimped Wire I/O Plug

.075"

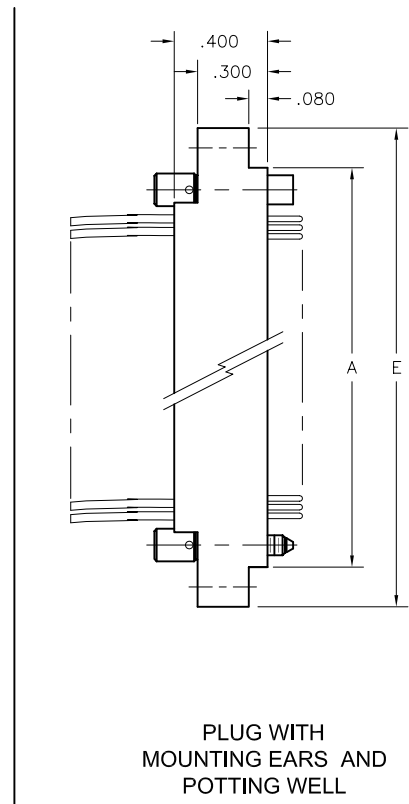
RA3

11 thru 80 Contacts

RA3D2-059-3EA-5900



PLUG WITHOUT
MOUNTING EARS OR
POTTING WELL



PLUG WITH
MOUNTING EARS AND
POTTING WELL

| DIMENSIONS | | | | | |
|------------|-------|-------|-------|-------|-------|
| SIZE | A | B | C | D | E |
| 11 | .665 | .475 | .225 | .150 | 1.005 |
| 23 | .965 | .775 | .525 | .450 | 1.305 |
| 35 | 1.265 | 1.075 | .825 | .750 | 1.605 |
| 47 | 1.565 | 1.375 | 1.125 | 1.050 | 1.905 |
| 59 | 1.865 | 1.675 | 1.425 | 1.350 | 2.205 |
| 71 | 2.165 | 1.975 | 1.725 | 1.650 | 2.505 |
| 80 | 2.390 | 2.200 | 1.950 | 1.875 | 2.730 |

| RA3 PLUG CONNECTORS MATE WITH: | | |
|--------------------------------|---|------|
| MATE | DESCRIPTION | PAGE |
| RM322 | 3 ROW STRAIGHT RECEPTACLE WITH EARS | R-21 |
| RM342 | 3 ROW STRAIGHT RECEPTACLE WITHOUT EARS | R-21 |
| RM362 | 3 ROW RIGHT ANGLE RECEPTACLE WITH EARS | R-23 |
| RM382 | 3 ROW RIGHT ANGLE RECEPTACLE WITHOUT EARS | R-23 |

REPLACEMENT CONTACTS:

RA000-001-100-0000
RA000-001-300-0000

SEE PAGE R-33.4 FOR CRIMP INSTRUCTIONS, CONTACT INSERTION AND CONTACT REMOVAL TOOLS.

PLUG: RA3D2-059-3EA-5900
XXXXX-XXX-XXX-XXXX

| | |
|-------------------------------------|--|
| SERIES | |
| RA .075" Screw Machine PC Connector | |
| BODY | |
| 3 | 3-Row |
| BODY STYLE: | |
| A | Plug, straight, w/ potting well, w/ mounting ears |
| B | Plug, straight, w/ potting well, w/out mounting ears |
| C | Plug, straight, w/out potting well, w/ mounting ears |
| D | Plug, straight, w/out potting well, w/out mounting ears |
| BODY MATERIAL: | |
| 2 | Polyphenylene sulfide (PPS) |
| SIZE | |
| 011, 023, 035, 047, 059, 071, 080 | |
| CONTACTS | |
| TYPE CONTACTS/TERMINATIONS: | |
| 1 | Pin, crimp, 28-30 awg. contact |
| 3 | Pin, crimp, 22-26 awg. contact |
| WIRING OPTIONS: | |
| XX | See wiring codes at right |
| HARDWARE | |
| STYLE OF HARDWARE: | |
| 0256 | None |
| Guide Hardware | |
| 5500 | Guide set |
| 5501-5568 | Guide set, polarized (see page R-38) |
| 5570 | Guide set, polarized, same as 5501 without Loctite® (to be keyed by customer) |
| 5700 | Two guide pins |
| 5800 | Two guide sockets |
| Jacking Hardware | |
| 2900 | Fixed jackset |
| 3000 | Fixed jackset, reversed |
| 1900 | Two fixed jackscrews |
| 2000 | Two fixed jacksockets |
| 5900 | Hex turning jackset, .200" knob |
| 6000 | Hex turning jackset, reversed, .200" knob |
| 6100 | Two hex turning jackscrews, .200" knob |
| 6200 | Two hex turning jacksockets, .200" knob |
| 6400 | Turning jackset, .490" knob |
| 6500 | Turning jackset, reversed, .490" knob |
| 6600 | Two turning jackscrews, .490" knob |
| 6700 | Two turning jacksockets, .490" knob |

= Option not RoHS compliant

If potting well is used with a pre-wired connector, it will be potted and not repairable.
If potting well is not used with a pre-wired connector, it will not be potted.
Contacts that are not potted in place can be removed and replaced only one time.
See page R-33.4 for crimp instructions, contact insertion and contact removal tools.

WIRE CODES

| TYPE and COLOR | | | LENGTH | |
|-----------------------|--------|---------------|--------|---------------------|
| Code | Size | Color | Code | Length (+1"/-0") |
| Mil-W-16878/4 | | | | |
| A | 22 awg | Ten repeating | A | 6" |
| B | 22 awg | White | B | 12" |
| C | 24 awg | Ten repeating | C | 18" |
| D | 24 awg | White | D | 24" |
| E | 26 awg | Ten repeating | E | 30" |
| F | 26 awg | White | F | 36" |
| G | 28 awg | Ten repeating | G | 42" |
| H | 28 awg | White | H | 48" |
| J | 30 awg | Ten repeating | J | 54" |
| K | 30 awg | White | K | 60" |
| L | | | L | 66" |
| M | | | M | 72" |
| N | | | N | 84" |
| P | | | P | 96" |
| R | | | R | 108" |
| S | | | S | 120" |
| Mil-W-22759/33 | | | | |
| L | 22 awg | Ten repeating | | |
| M | 22 awg | White | | |
| N | 24 awg | Ten repeating | | |
| P | 24 awg | White | | |
| R | 26 awg | Ten repeating | | |
| S | 26 awg | White | | |
| T | 28 awg | Ten repeating | | |
| U | 28 awg | White | | |
| V | 30 awg | Ten repeating | | |
| W | 30 awg | White | | |

USING WIRE CODES:

RA3D2-059-3EA-5900

Type and Color  Length

Color sequence for Ten repeating wire colors:

(Beginning in position #1)

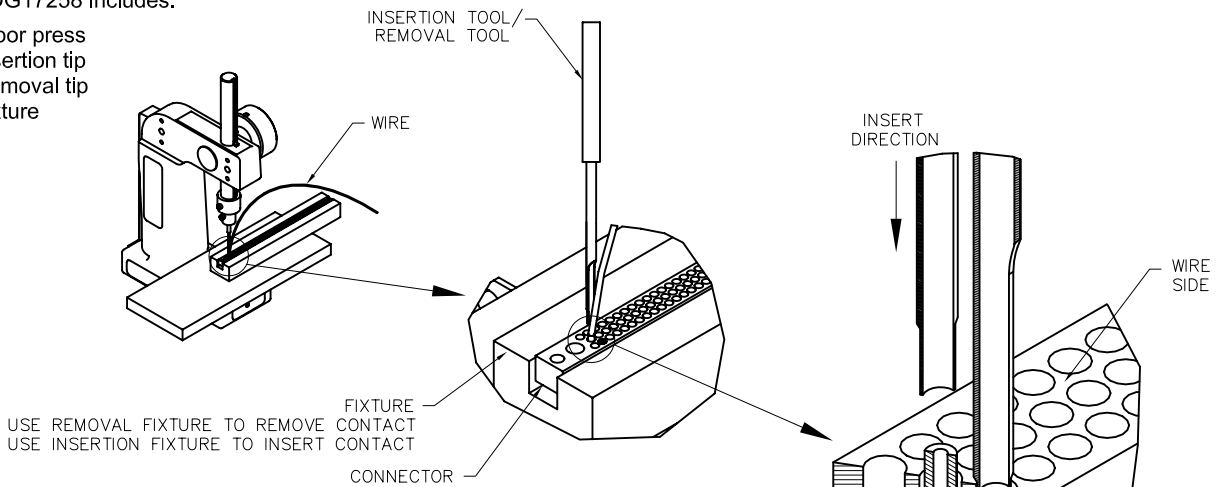
- Black
- Brown
- Red
- Orange
- Yellow
- Green
- Blue
- Violet
- Grey
- White

Repeat this sequence until connector is fully loaded.

RA Assembly Instructions

CDG17258 includes:

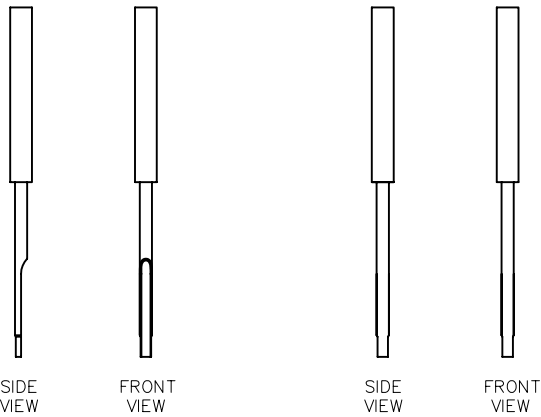
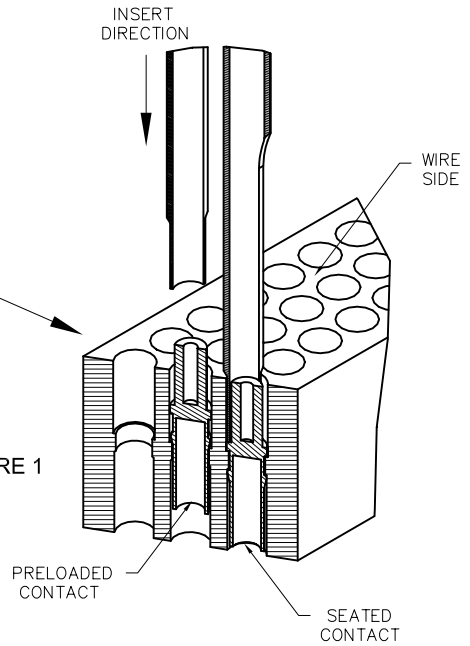
- Arbor press
- Insertion tip
- Removal tip
- Fixture



CONTACT INSERTION INSTRUCTIONS:

1. Load connector with crimped contacts.
2. Place preloaded connector on insertion fixture with wire side facing up.
3. Position fixture so insertion tool is over contact.
4. Place wire against insertion tool cutout trench.
5. Crank handle on press to seat contact.

FIGURE 1



INSERTION TOOL:
AIRBORN P/N: CDG17256

REMOVAL TOOL:
AIRBORN P/N: CDG17257

CONTACT REMOVAL INSTRUCTIONS:

1. Place connector on removal fixture with mating side facing up.
2. Position fixture so removal tool is over contact.
3. Crank handle on press to remove contact.

FIGURE 2

