

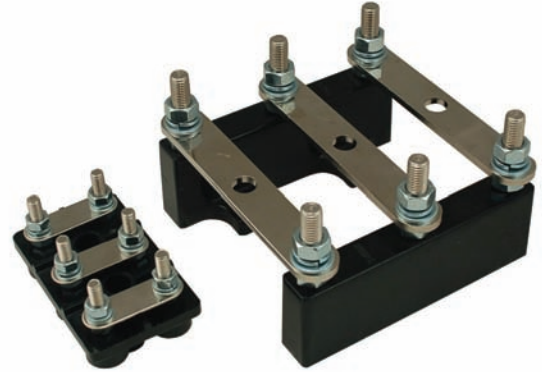
Motor Terminal Blocks

Marathon Special Products has been an industry leader in electrical/electronic components designed for circuit protection and connection applications for over 60 years.

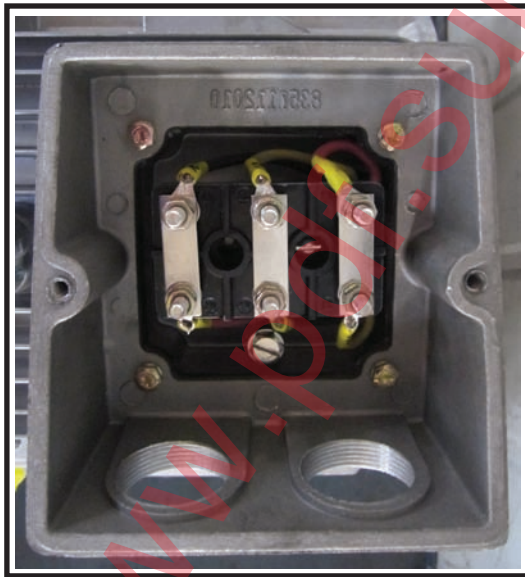
We are pleased to introduce our new **Motor Terminal Blocks**. The new motor blocks provide a systematic method to wire electrical motors in the motor's junction box and allow for circuit management.

These blocks allow for much easier circuit testing and motor replacement over the traditional method of bolts, nuts and insulation. The motor terminal block links can be assembled for either wye or delta wiring configurations.

These blocks offered by Marathon Special Products are the only Motor Terminal Blocks with up to 1,000V rating and are available in amperages up to 520A. To achieve these ratings, wires need to be terminated with UL Listed crimp lugs.



Shown left to right: ST750M8 and ST750M12






Motor Terminal Block application

ELECTRICAL/MECHANICAL

- Insulator base, high strength polyester (130°C and UL 94 V-0)
- 35 to 520 Amps
- Up to 1000 Volts
- Studs and hardware, steel, zinc plated
- Terminal links, copper, nickel plated
- Terminal links & hardware provided assembled

CERTIFICATIONS

-  UL Recognized File No. XCFR2.E62806
-  UL Investigated to CSA 22.2 No. 158, File No. XCFR8.E62806
-  UL Investigated to IEC 60947-7-1, File No. XCHG2.E243117, IEC 60947-7-1
- UL Investigated to SANS 1804-2
- RoHS and REACH Compliant

The majority of Marathon's products have been tested and comply to UL requirements for use with flexible stranded wires, have short-circuit current ratings (SCCR) and are CE 1000 Volt AC/DC rated. Marathon's short lead times, technical support, and excellent customer service ensure you receive a quality product as quickly as possible. Please visit www.marathonsp.com for detailed datasheets and specific product information. You can also call (419) 352-8441 or email us at marketing@marathonsp.com.

Motor Terminal Blocks

| Catalog Number | Stud Size | Style | Amperage | | Voltage | | | Wire Range (mm) | |
|----------------|-----------|-----------|----------|------|-------------|-------|-----------|-----------------|------------|
| | | | UL/CSA | IEC | UL/CSA* | IEC | Sans 1804 | Max. | Min. |
| ST755M4 | M4 | One piece | 38A | 50A | 300V (C/C) | 630V | 250V | #8 AWG | #18 AWG |
| ST750M4 | M4 | One piece | 35A | 50A | 1000V (E/C) | 1000V | 1100V | #8 AWG | #18 AWG |
| ST755M5 | M5 | One piece | 50A | 50A | 600V (C/C) | 800V | 660V | #8 AWG | #16 AWG |
| ST750M6 | M6 | One piece | 101A | 121A | 1000V (E/C) | 1000V | 1100V | #2 AWG | #14 AWG |
| ST750M8 | M8 | One piece | 160A | 185A | 1000V (E/C) | 1000V | 1100V | 2/0 AWG | #12 AWG |
| ST755M10 | M10 | One piece | 185A | 217A | 1000V (E/C) | 1000V | 1100V | 3/0 AWG | #8 AWG |
| ST755M12 | M12 | One piece | 242A | 271A | 1000V (E/C) | 1000V | 1100V | 250 kcmil | #8 AWG |
| ST750M12 | M12 | Two piece | 315A | 374A | 1000V (E/C) | 1000V | 1100V | 400 kcmil | #8 AWG |
| ST750M16 | M16 | Two piece | 520A | 520A | 1000V (E/C) | 1000V | 1100V | (2) 300 kcmil | (2) #2 AWG |

+UL Voltage Classes - C = General Industrial; E = Terminal Blocks rated 601-1500V

+CSA Voltage Classes - C = General Industrial

All blocks include links and hardware assembled

FIGURE 1:

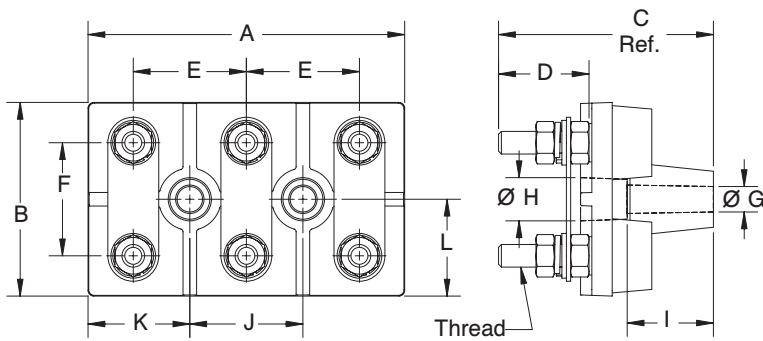
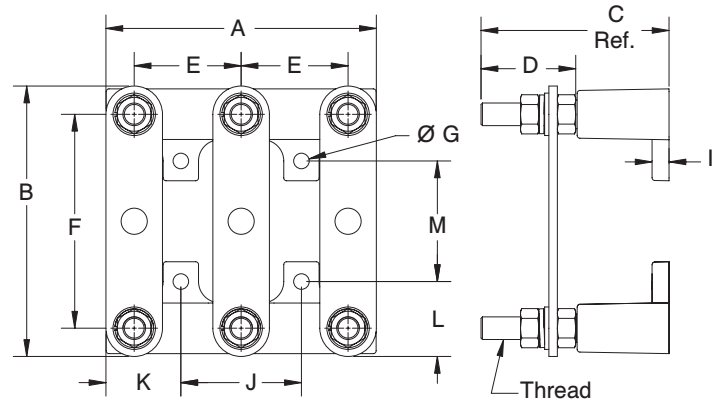


FIGURE 2:



| Catalog Number | Thread Size | Description | FIG | A | B | C | D | E | F | G | H | I | J | K | L | M |
|----------------|-------------|----------------------------|-----|-------|-------|-------|------|------|-------|------|------|------|------|------|------|------|
| ST755M4 | M4 x 0.7 | One piece base with risers | 1 | 55.0 | 33.0 | 43.0 | 16.0 | 20.0 | 20.0 | 6.0 | 10.0 | 20.0 | 22.0 | 16.5 | 16.5 | N/A |
| ST750M4 | | | | 63.0 | 36.5 | 42.0 | 16.5 | 26.5 | 26.5 | 5.8 | 10.0 | 9.0 | 26.5 | 18.3 | 18.3 | N/A |
| ST755M5 | M5 x 0.8 | | | 68.0 | 40.0 | 45.0 | 20.0 | 25.0 | 25.0 | 5.9 | 10.0 | 18.0 | 25.0 | 21.5 | 20.0 | N/A |
| ST750M6 | M6 x 1.0 | | | 85.0 | 50.0 | 62.0 | 27.0 | 30.0 | 30.0 | 7.0 | 12.0 | 23.6 | 30.0 | 27.5 | 25.0 | N/A |
| ST750M8 | M8 x 1.25 | | | 112.0 | 68.5 | 76.0 | 32.0 | 40.0 | 40.0 | 9.0 | 15.3 | 31.0 | 40.0 | 36.0 | 34.3 | N/A |
| ST755M10 | M10 x 1.5 | | | 140.0 | 86.0 | 91.0 | 45.0 | 50.0 | 50.0 | 9.0 | 15.3 | 30.5 | 50.0 | 45.0 | 43.0 | N/A |
| ST755M12 | M12 x 1.75 | | | 170.0 | 110.0 | 97.0 | 45.0 | 60.0 | 60.0 | 11.2 | 18.0 | 28.0 | 60.0 | 55.0 | 55.0 | N/A |
| ST750M12 | | | | 179.2 | 167.0 | 107.0 | 51.0 | 69.7 | 133.2 | 11.0 | N/A | 12.0 | 85.3 | 47.0 | 40.9 | 85.3 |
| ST750M16 | M16 x 2.0 | Two piece base | 2 | 201.3 | 191.0 | 133.0 | 67.0 | 75.7 | 151.3 | 11.0 | N/A | 12.0 | 85.3 | 58.0 | 52.9 | 85.3 |

For electronic drawings or 2D/3D CAD data, submit request at www.marathonsp.com/drawings.html



13300 Van Camp Road • P.O. Box 468 • Bowling Green, Ohio 43402
 Phone: (419) 352-8441 • Fax: (419) 352-0875 • marketing@marathonsp.com

www.marathonsp.com

