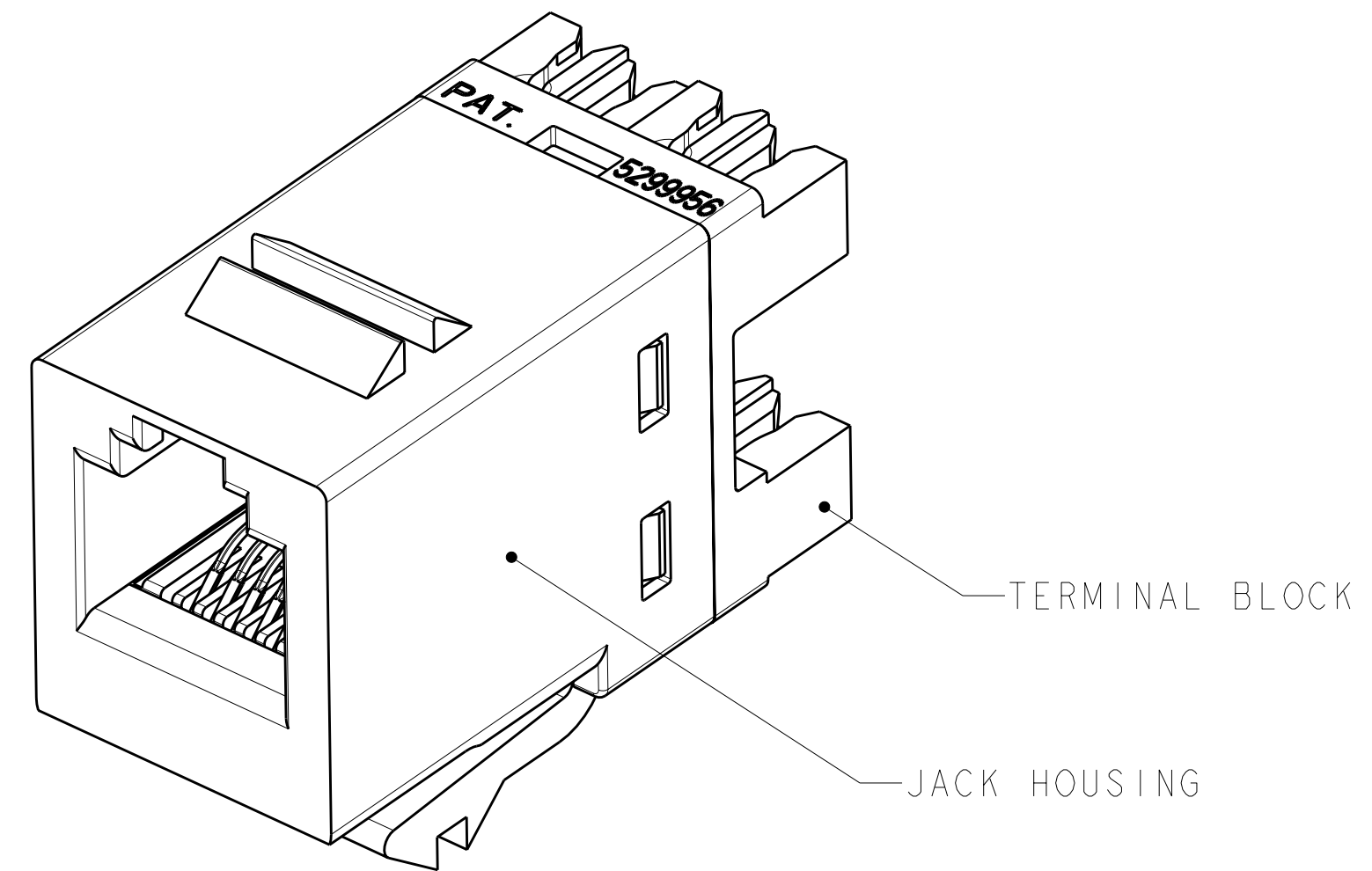
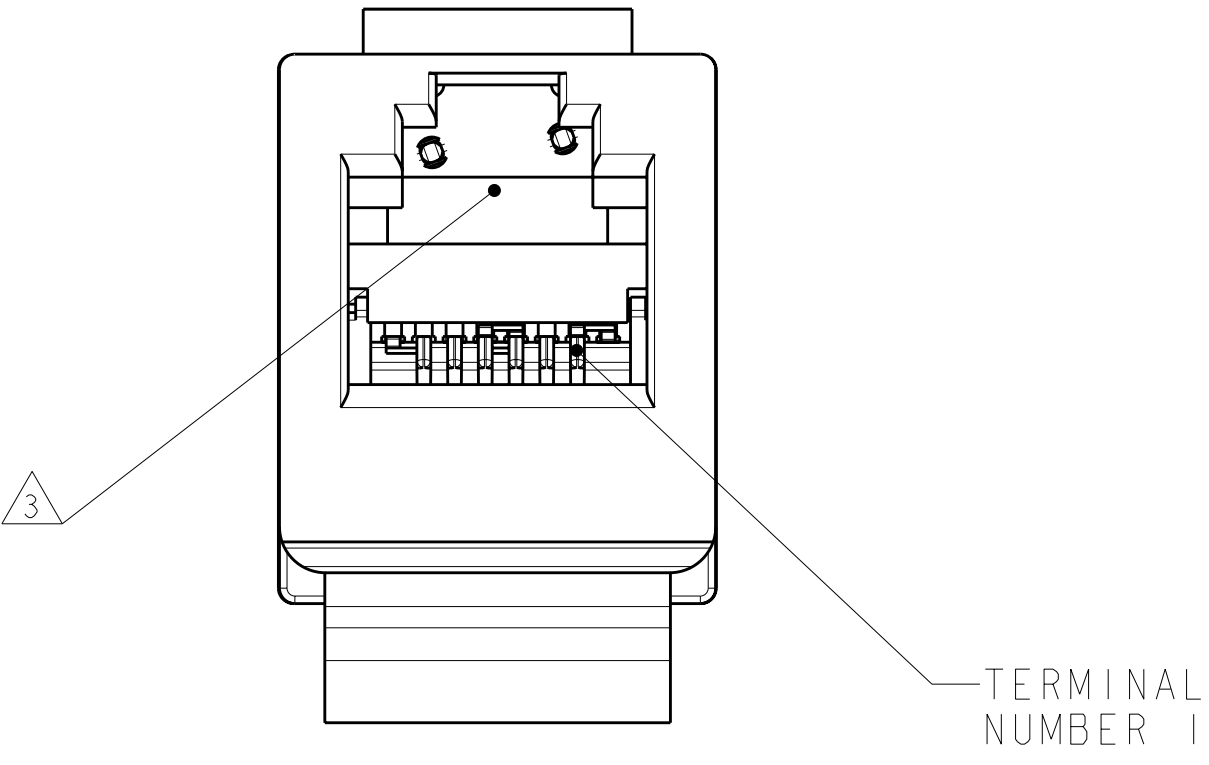


LOC	DIST	REV	DATE	BY	APPD
HM	00	D	02NOV2006	GG	BM
		E	13JUL2007	GG	SA
		F	25FEB2009	JB	SA

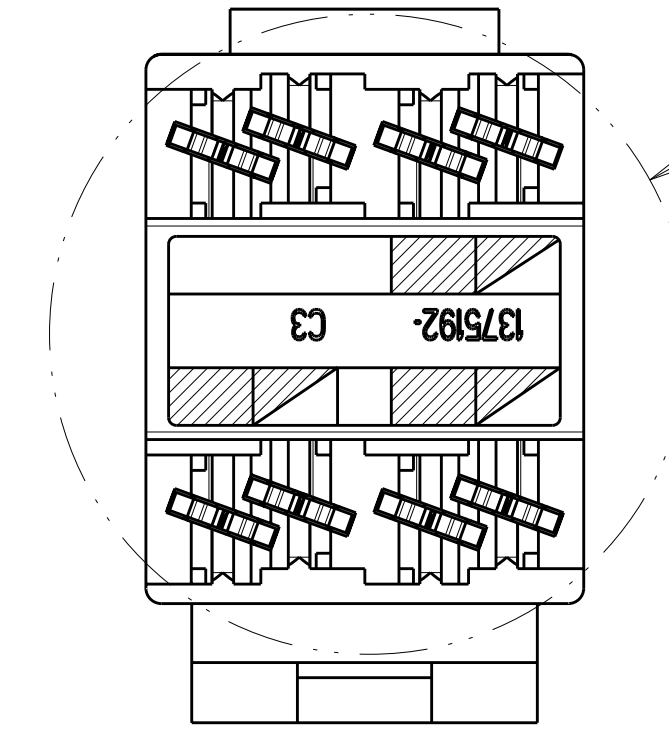
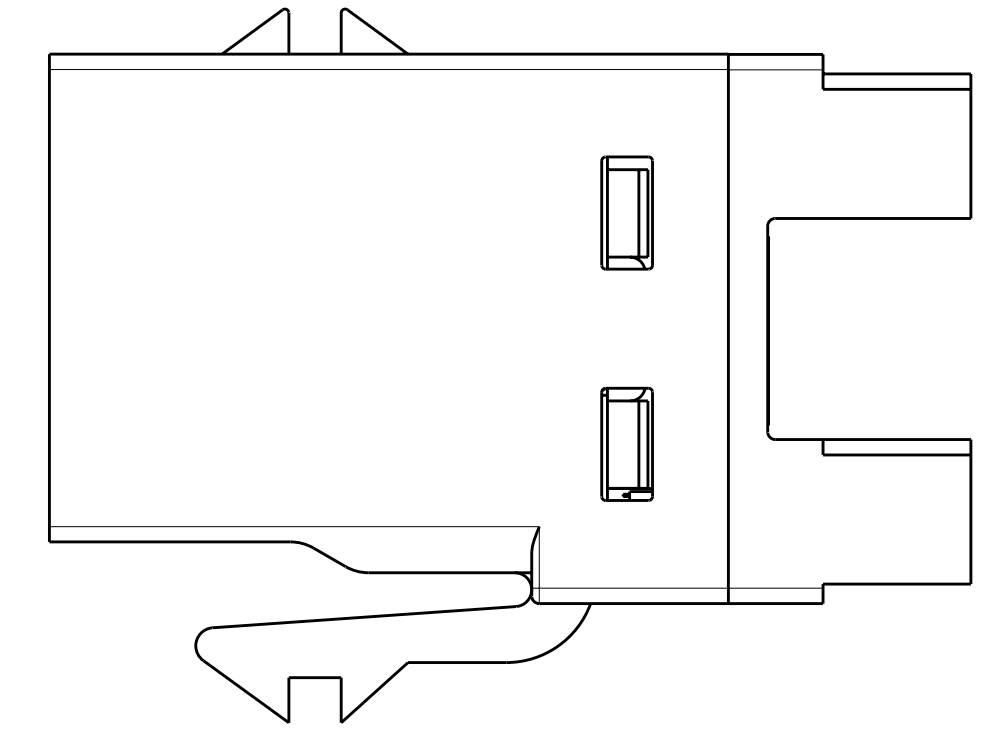


TERMINAL BLOCK  
 JACK HOUSING

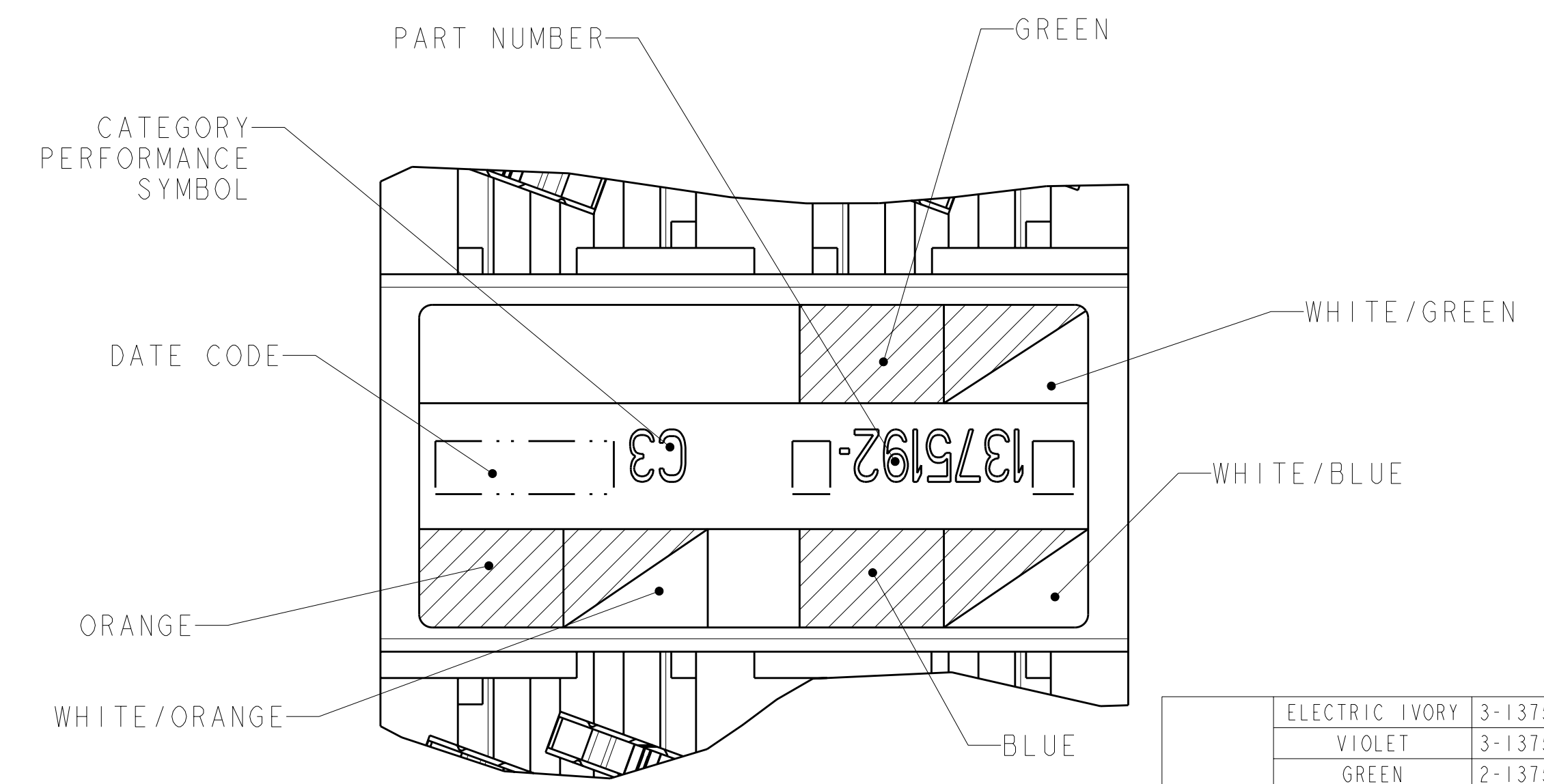
- 1. MATERIAL: JACK HOUSING - POLYPHENYLENE OXIDE, 94V-0 RATED. 110 BLOCK - POLYCARBONATE. ARRAY TRAY - PBT POLYESTER. JACK CONTACTS ARRAY - BERYLLIUM COPPER, PLATED WITH 1.27µm [.000050] MINIMUM THICK GOLD IN LOCALIZED AREA AND 3.81µm [.000150] MINIMUM THICK MATTE TIN IN BOARD INTERFACE AREA OVER 1.27µm [.000050] MINIMUM THICK NICKEL UNDERPLATE. IDC TERMINALS - PHOSPHOROUS BRONZE, PLATED WITH 3.81µm [.00015] MINIMUM THICK MATTE TIN OVER 1.27µm [.00005] MINIMUM THICK NICKEL UNDERPLATE.
- 2. SL 110 JACK WILL TERMINATE 22-24 AWG SOLID AND 24-26 AWG STRANDED CONDUCTORS, 1.27[.050] MAXIMUM INSULATION DIAMETER.
- 3. CAVITY CONFORMS TO FCC RULES AND REGULATIONS PART 68 SUBPART F REQUIREMENTS.
- 4. MOUNTING PANEL THICKNESS 1.47 - 1.60 [.058 - .063].
- 5. THESE TWO SUGGESTED CUTOUT OPENINGS ARE USED IN TANDEM WITH DUAL FRONT AND BACK CUTOUTS.
- 6. ONE MODULAR JACK ASSEMBLY PER POLYBAG.
- 7. TWENTY-FIVE MODULAR JACK ASSEMBLY PER POLYBAG.
- 8. REFER TO 408-8858 FOR TERMINATION INSTRUCTIONS USING SL SERIES TOOL TERMINATION. REFER TO 408-8602 FOR TERMINATION INSTRUCTIONS USING 110 PUNCH DOWN TOOL.



TERMINAL NUMBER 1



SEE DETAIL A

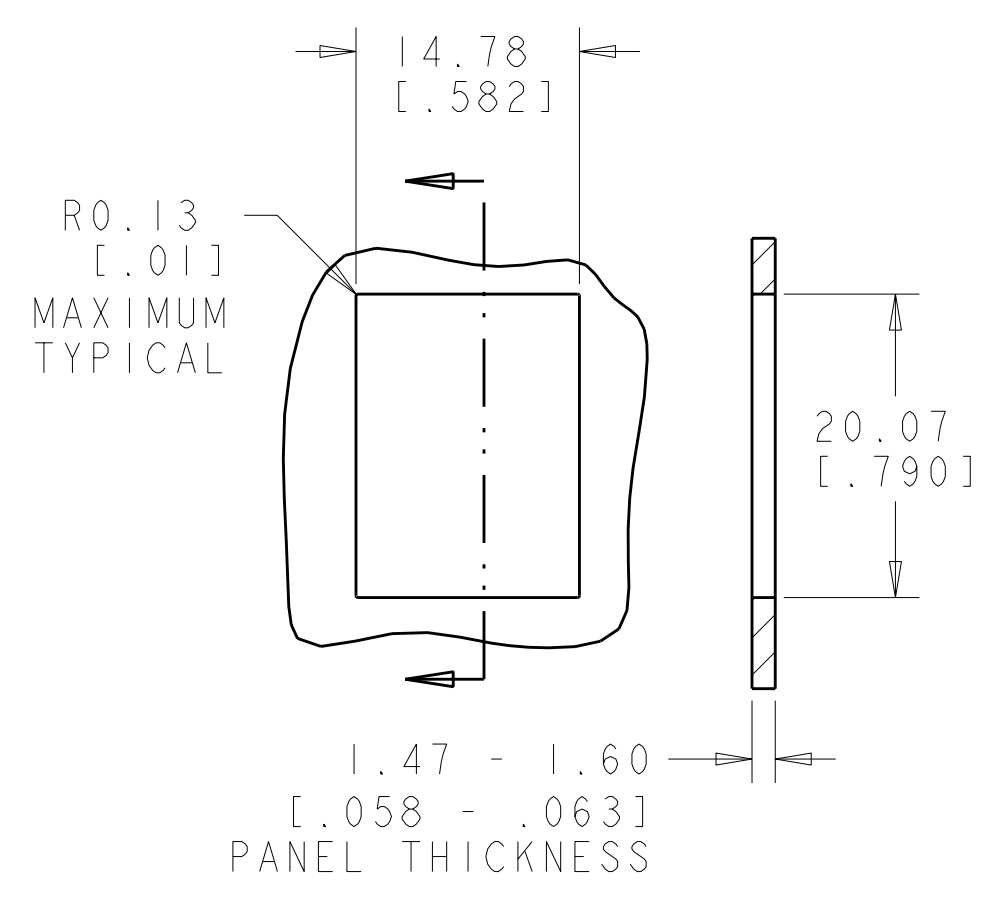


PART NUMBER  
 CATEGORY PERFORMANCE SYMBOL  
 DATE CODE  
 ORANGE  
 WHITE/ORANGE  
 GREEN  
 WHITE/GREEN  
 WHITE/BLUE  
 BLUE

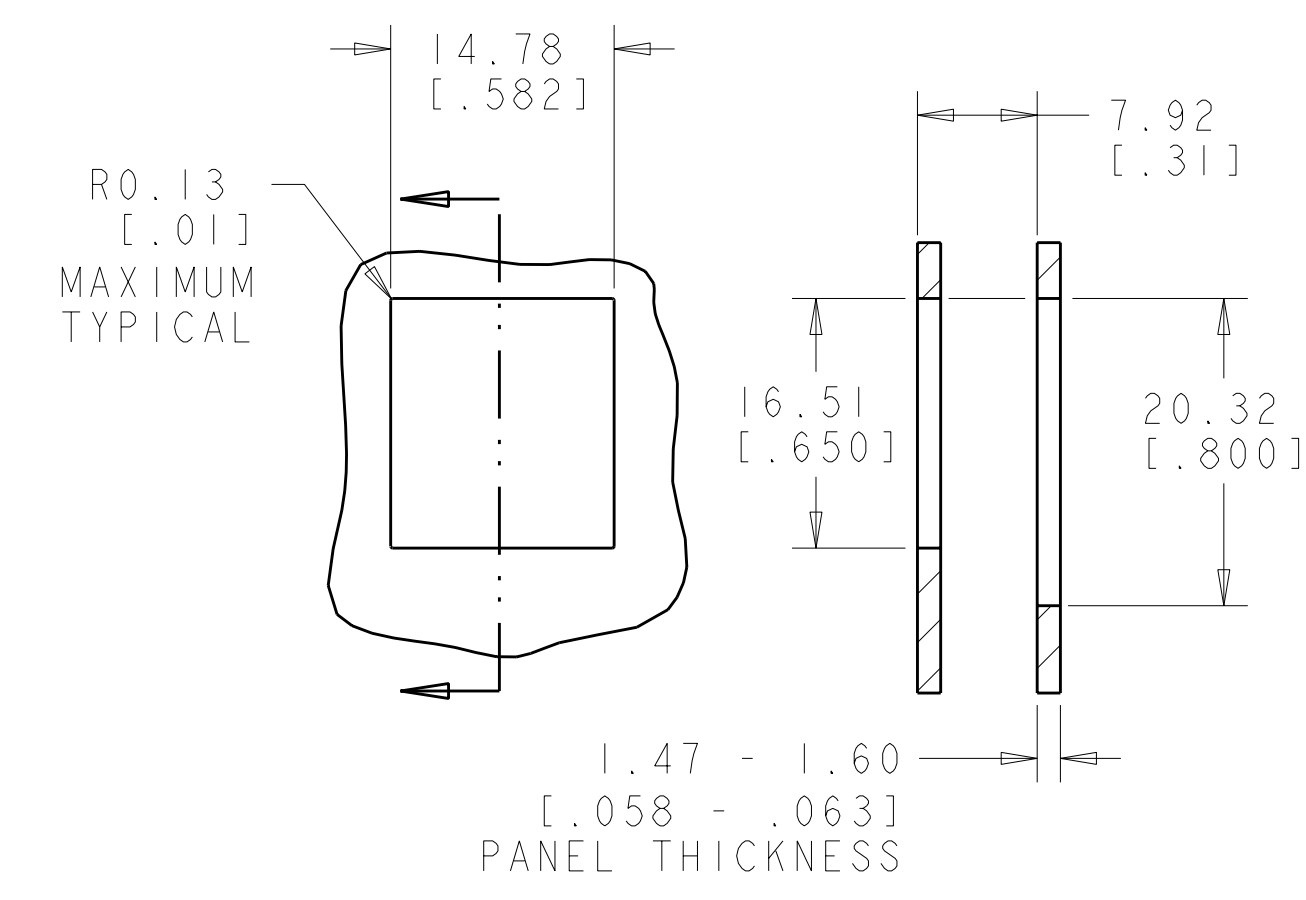
DETAIL A  
 SCALE 10:1

COLOR CODE	110 BLOCK	MODULAR JACK
WHITE/BLUE		4
BLUE		3
WHITE/ORANGE		2
ORANGE		5
WHITE/GREEN		1
GREEN		6
WHITE/BROWN		
BROWN		

ELECTRICAL SCHEMATIC (USOC)



SINGLE PANEL CUTOUT



SUGGESTED FLUSH MOUNT  
 PANEL APPLICATION CUTOUT

HOUSING COLOR	PART NUMBER
ELECTRIC IVORY	3-1375192-1
VIOLET	3-1375192-0
GREEN	2-1375192-9
YELLOW	2-1375192-8
RED	2-1375192-7
BLUE	2-1375192-6
ORANGE	2-1375192-5
NEMA GRAY	2-1375192-4
WHITE	2-1375192-3
BLACK	2-1375192-2
LIGHT ALMOND	2-1375192-1
ELECTRIC IVORY	1-1375192-1
VIOLET	1-1375192-0
GREEN	1375192-9
YELLOW	1375192-8
RED	1375192-7
BLUE	1375192-6
ORANGE	1375192-5
NEMA GRAY	1375192-4
WHITE	1375192-3
BLACK	1375192-2
LIGHT ALMOND	1375192-1

DIMENSIONS: MM [inches] TOLERANCES UNLESS OTHERWISE SPECIFIED: 9 PLC ± 3 PLC ± 5 PLC ± 4 PLC ± ANGLES ±		DWN T. PITTS 05NOV01 CHK L. SMITH 15NOV01 APVD C. DOOLEY 15NOV01 PRODUCT SPEC 108-1990-1 APPLICATION SPEC 108-1990-1 WEIGHT CUSTOMER DRAWING		Tyco Electronics Harrisburg, PA 17105-3608 ASSEMBLY, SL 110 JACK, CATEGORY 3 SIZE CAGE CODE DRAWING NO A1 00779 C=1375192 SCALE 4:1 SHEET 1 OF 1 REV F	
---	--	--	--	---	--