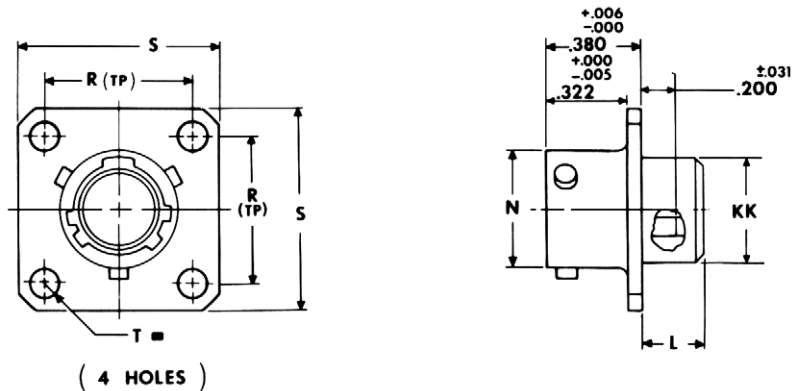


JT02R (MS27499) — crimp box mounting receptacle



PDF.Support

* JT02RE-XX-XXX (MS27499E)
 ** JTS02RE-XX-XXX
 *** JTN02RE-XX-XXX

■ \oplus .005 DIA $\text{\textcircled{M}}$

- * To complete order number see page 49.
- ** High temperature version; to complete order number see page 49.
- *** Clear iridite finish (gold color), N₂O₄ resistant; to complete order number see page 49.

Shell Size	L Max.	N +.001 -.005	R (TP)	S ±.016	T ±.005	KK Dia. Max.
8	.286	.473	.594	.812	.120	.438
10	.286	.590	.719	.938	.120	.563
12	.286	.750	.812	1.031	.120	.688
14	.286	.875	.906	1.125	.120	.813
16	.286	1.000	.969	1.219	.120	.938
18	.286	1.125	1.062	1.312	.120	1.047
20	.286	1.250	1.156	1.438	.120	1.172
22	.286	1.375	1.250	1.562	.120	1.297
24	.286	1.500	1.375	1.688	.147	1.422

All dimensions for reference only.
 NOTE: For applications requiring an environmental seal, please refer to JT00R, page 10.