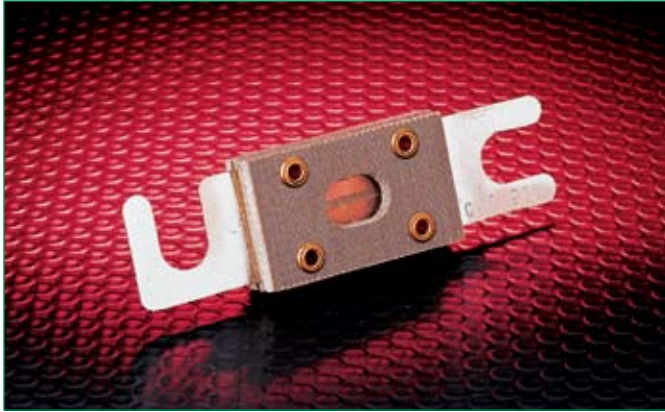
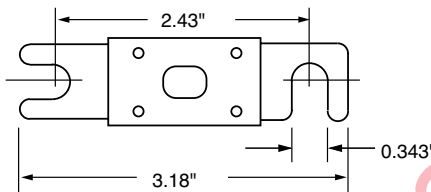


Fork-Lift and Stud-Mounted Fuses

32 – 130 Volts DC • Fast Acting and Time-Delay



CNL fast-acting and CNN very fast acting fuses are recommended for use on battery operated lift trucks and other low voltage battery operated equipment.



CNL/CNN Limiter Fuses

Specifications

Voltage Ratings: CNL: 32 Volts DC
CNN: 48 Volts DC, 75 Volts AC
Interrupting Rating: 2,500 amperes
Ampere Range: 10 – 800 amperes
Maximum Torque: 90 Inch lbs.

Recommended Fuse Block

LFFB001

Ampere ratings

CNL	35	80	150	250	350
	40	100	175	275	400
	50	125	200	300	500
	60	130	225	325	
CNN	10	80	175	300	500
	35	90	200	325	600
	40	100	225	350	700
	50	125	250	400	800
	60	150	275		

Example part number (series & amperage): CNN 700



CBO/CCK/CCL Lift-Truck Fuses

CBO fast acting, and CCK and CCL dual-element time-delay fuses are recommended for fork lift trucks and other similar battery operated equipment.

Specifications

Voltage Ratings: CBO: 32 Volts DC
CCK: 130 Volts DC (1-100A)
72 Volts DC (120-200A)
48 Volts DC (225-300A)
CCL: 125 Volts DC
Interrupting Rating: CBO, CCK & CCL: 10,000A
Ampere Range: 1 – 300 amperes

For operating characteristics contact factory

Ampere ratings

CBO	10	25	50	80	
<i>Fast Acting</i>	12	30	60	100	
	15	35	70	125	
	20	40	75	150	
CCK	1	25	60	120	200
<i>Time-Delay</i>	2	30	70	140	225
	10	35	75	150	250
	15	40	80	160	300
	20	50	100	175	
CCL	30	40	60	100	
<i>Time-Delay</i>	35	50	80	120	

Example part number (series & amperage): CCK 150

Part No.	A	B	C
CCK 1-15A	2.810	2.204	0.510
CCK 20-30A	3.060	2.454	0.510
CCK 35-60A	3.629		0.750
CCK 70-120A	4.129	3.454	1.00
CCK 140-200A	4.362	3.579	1.00
CCK 225-300A	4.612	3.829	1.00
CCL 30-60A	3.060	2.454	0.51
CCL 80-120A	3.38	2.70	0.75

