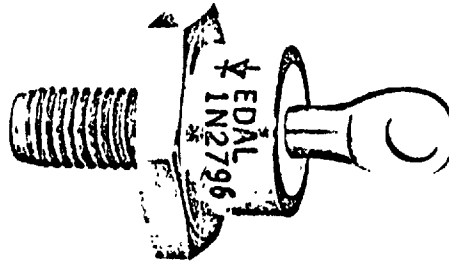
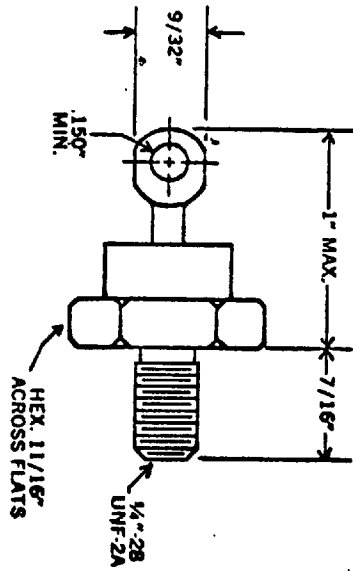


T-01-19 -



B_v _____
 PIV See Table _____
 I_o 40 A @ 140 _____ Case
 I_s 200 AMPS _____
 V_f 1.1 v @ 100 A @ 25 _____
 I_r I_r @ PIV @ 175 _____
 @ _____

STYLE DO-5

STAMP Edal. P/N

EQUIV. TO E5 EXCEPT _____

P/N	PIV (VOLTS)	I_r (mA)
1N1183A	50	5
1N1184A	100	5
1N1185A	150	5
1N1186A	200	5
1N1187A	300	2.5
1N1188A	400	2.2
1N1189A	500	2.0
1N1190A	600	1.8

Note: Add R after P/N to denote reverse polarity

REV.	DESCRIPTION	BY	DATE

EDAL INDUSTRIES INC. EAST HAVEN, CONN. 06512			DRAWN DV	APP 	DATE 6/2/72
TOLERANCES UNLESS OTHERWISE NOTED					
			FRACTIONS ±	DECIMALS ±	
TITLE			DWG. NO.		
SILICON RECTIFIER			1N1183A - 1N1190A		