

PRODUCT NUMBER
5 6 1 3 1 - X X X - X X - X X X X

PLATING →
S=15µ"[0.38µm]GOLD ON CONTACT AREA
120µ"[3.0µm]TIN/LEAD ON TAIL
G=30µ"[0.76µm]GOLD ON CONTACT AREA
120µ"[3.0µm]TIN/LEAD ON TAIL
T=120µ"[3.0µm]TIN/LEAD ON CONTACT AREA AND ON TAIL(SEE NOTE 9).

PIN STYLE	OAL
12	0.630/16.00
14	0.730/18.54
16	0.830/21.08
18	0.930/23.62
20	1.030/26.16
22	1.130/28.70
24	1.230/31.24
26	1.330/33.78

STACK HEIGHT NOTE 7
POSITIONS PER ROW 01 TO 36

LEAD FREE PRODUCT NUMBER
5 6 1 3 1 - X X X X X X X X X LF

PLATING →
S=15µ"[0.38µm]GOLD ON CONTACT AREA
100µ"[2.54µm]TIN ON TAIL
G=30µ"[0.76µm]GOLD ON CONTACT AREA
100µ"[2.54µm]TIN ON TAIL
T=100µ"[2.54µm]TIN ON CONTACT AREA AND ON TAIL(SEE NOTE 13).

PIN STYLE	OAL
12	0.630/16.00
14	0.730/18.54
16	0.830/21.08
18	0.930/23.62
20	1.030/26.16
22	1.130/28.70
24	1.230/31.24
26	1.330/33.78

LEAD FREE NOTE 10 & 11
STACK HEIGHT NOTE 7
POSITIONS PER ROW 01 TO 36

NOTES:

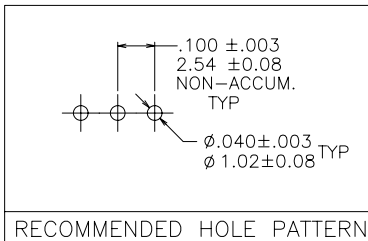
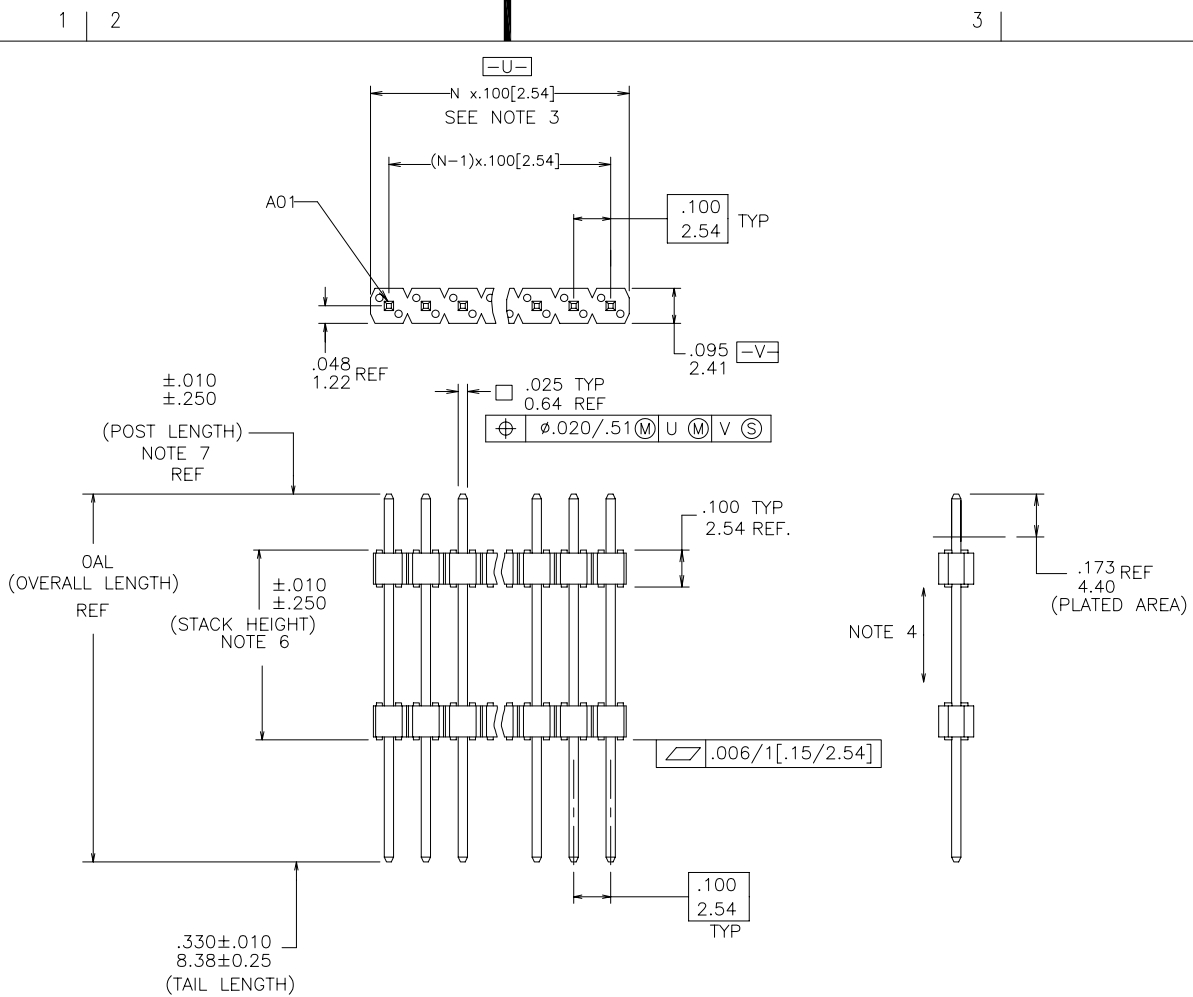
- HOUSING MAT'L: HIGH TEMPERATURE THERMOPLASTIC. UL94V-0
COLOR: BLACK
- PIN MATERIAL: PHOSPHOR-BRONZE
- TO DETERMINE DIMENSIONS:
N = NUMBER OF POSITIONS PER ROW.
EXAMPLE: 10 POS., N x .100[2.54]=1.00[25.40].
- 2LBS/0.9KG MIN. PIN RETENTION IN EITHER DIRECTION
- PACKAGED IN POLY BAGS.
- STACK HEIGHT IS DETERMINED BY CUSTOMER APPLICATION REQUIREMENTS.
EXAMPLE FOR STACK HEIGHT: $0.5 \ 0 \ 0 = .500$ IN.
- POST LENGTH IS DETERMINED BY: (OAL)-(TAIL LENGTH)-(STACK HT.)= POST LENGTH
- UNDERPLATING: 50µ"/1.27µm Ni.
- PIN TIPS ON TIN/LEAD PRODUCT MAY HAVE BARE METAL ON TWO SIDES, BOTH ENDS.
- PART NUMBERS WITH "LF" AT THE END ARE LEAD FREE.
- THIS PRODUCT MEETS EUROPEAN UNION DIRECTIVES AND OTHER COUNTRY REGULATION AS DESCRIBED IN GS-22-008.
- THE HOUSING WILL WITHSTAND EXPOSURE TO 260°C PEAK TEMPERATURE FOR 20 SECONDS IN A CONVECTION, INFRA-RED OR VAPOR PHASE REFLOW OVEN. SEE APPLICATION NOTES/PROCEDURES IF THEY ARE AVAILABLE OR FOR 15 SECONDS IN A WAVE SOLDER APPLICATION WITH A 1.5mm MINIMUM THICK CIRCUIT BOARD.
- "THIS PRODUCT HAS 100% PURE TIN PLATING IN THE INTERFACE AND HAS NOT BEEN TESTED FOR WHISKER GROWTH IN ALL INTERCONNECT ENVIRONMENTS."

mat'l. code SEE NOTES 1 & 2		tolerances unless otherwise specified		CUSTOMER COPY		FCI www.fciconnect.com	
ltr	ecn no	dr	date	.XX ±.01/0.3	projection 	title UNSHROUDED HDR. S/R STACK, THRU HOLE	
A	v92812	DAI	08/24/99	linear .XXX ±.005/0.13			
B	v21476	GIP	09/17/02	.XXXX ±.0020/0.051			
C	M05-0118	MHT	6/03/05	angles 0° ±2°	INCH/MM scale 1:1	product family BERGSTIK	
				dr D.INGRAM 06/02/99		size	code 213
				enr H.SUNDY 07/21/99		dwg no	sheet 1 of 2
				chr H.SUNDY 07/21/99		A	56131
sheet index	revision sheet	C	C				
		1	2				

Tous droits strictement reserves. Reproduction ou communication a des tiers interdite sous quelque forme que ce soit sans autorisation ecrite du proprietaire. Propriete de c FCI. Droits de reproduction FCI.

FCI

All rights strictly reserved. Reproduction or issue to third parties in any form whatever is not permitted without written authority from the proprietor. Property of FCI. Copyright FCI.



mat'l. code				tolerances unless otherwise specified		CUSTOMER COPY		 www.fciconnect.com			
ltr	ecn no	dr	date	linear	.XX ±.01/0.3	projection		title			
c					.XXX ±.005/0.13			UNSHROUDED HDR. S/R STACK, THRU HOLE		code	213
					.XXX ±.0020/0.051					sheet	2 of
				angles	0° ±2°	INCH/MM	scale	product family			
				dr	M.HERNANDEZ 06/02/99			BERGSTIK		code	213
				enr	S.FIERRO 6/03/05			size		dwg no	56131
				chr	S.FIERRO 6/03/05			A			
				appd	S.FIERRO 6/03/05	1:1					
sheet index	revision sheet							cage code			
								22526			

1 | 2

3 |

4

ACAD

PDM: Rev:C

STATUS: Released

Printed: Jun 10, 2005