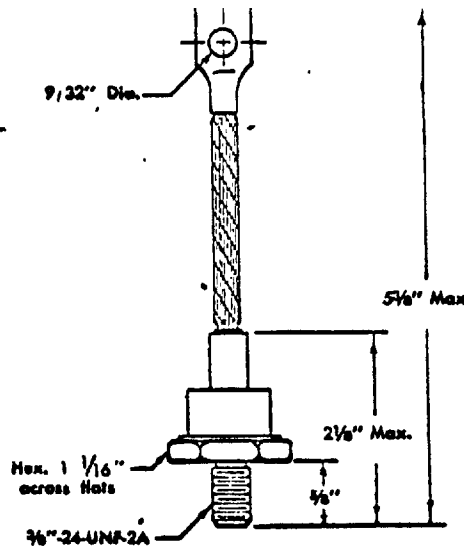


T-01-21



B<sub>v</sub> \_\_\_\_\_  
 PIV SEE CHART  
 I<sub>o</sub> 100A @ 130 °C  
 I<sub>s</sub> 2,300 AMPS  
 V<sub>f</sub> 1.25 v @ 100A @ 130 °C  
 I<sub>r</sub> SEE CHART @ PIV @ 130 °C  
 \_\_\_\_\_ @ \_\_\_\_\_ @ \_\_\_\_\_ °C

STYLE DO-8  
 STAMP ---

EQUIV. TO \_\_\_\_\_ EXCEPT \_\_\_\_\_  
 SUFFIX "R" DENOTES REVERSE POLARITY.

PART NUMBER	PIV	IR
1N3288A	100	24 mA
1N3289A	200	24 mA
1N3290A	300	24 mA
1N3291A	400	24 mA
1N3292A	500	21 mA
1N3293A	600	17 mA
1N3294A	800	13 mA
1N3295A	1,000	11 mA
1N3296A	1,200	9 mA
1N3297A	1,400	7 mA

REV.	DESCRIPTION	BY	DATE

<b>EDAL INDUSTRIES INC.</b> EAST HAVEN, CONN. 06512	DRAWN DV	APP <i>EM</i>	DATE 7/15/74
	TOLERANCES UNLESS OTHERWISE NOTED FRACTIONS ±                      DECIMALS ±		
TITLE SILICON RECTIFIER		DWG. NO. 1N3288A - 1N3297A	