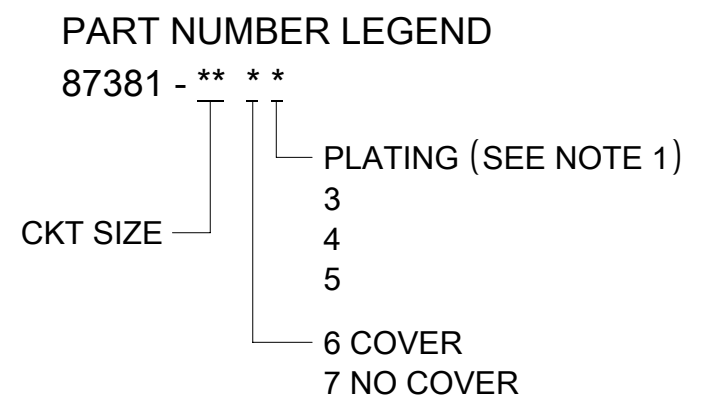


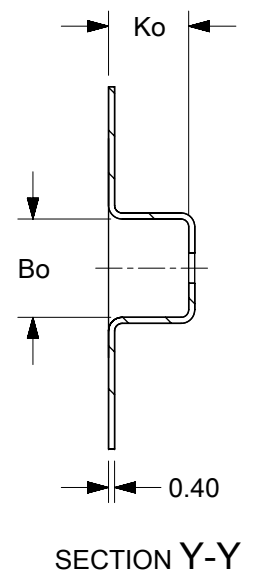
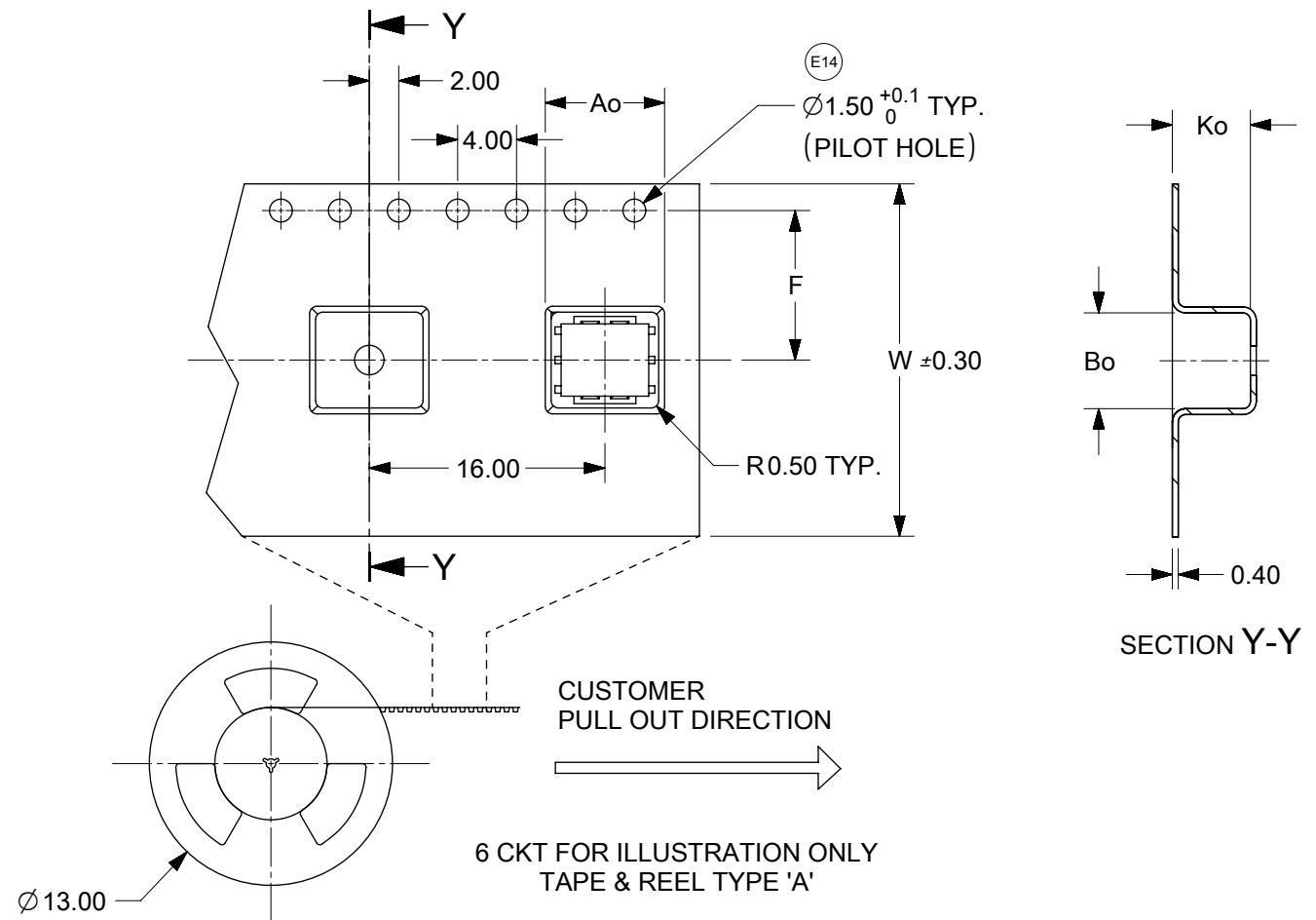
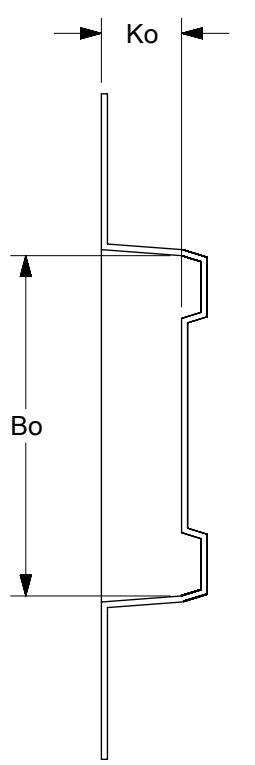
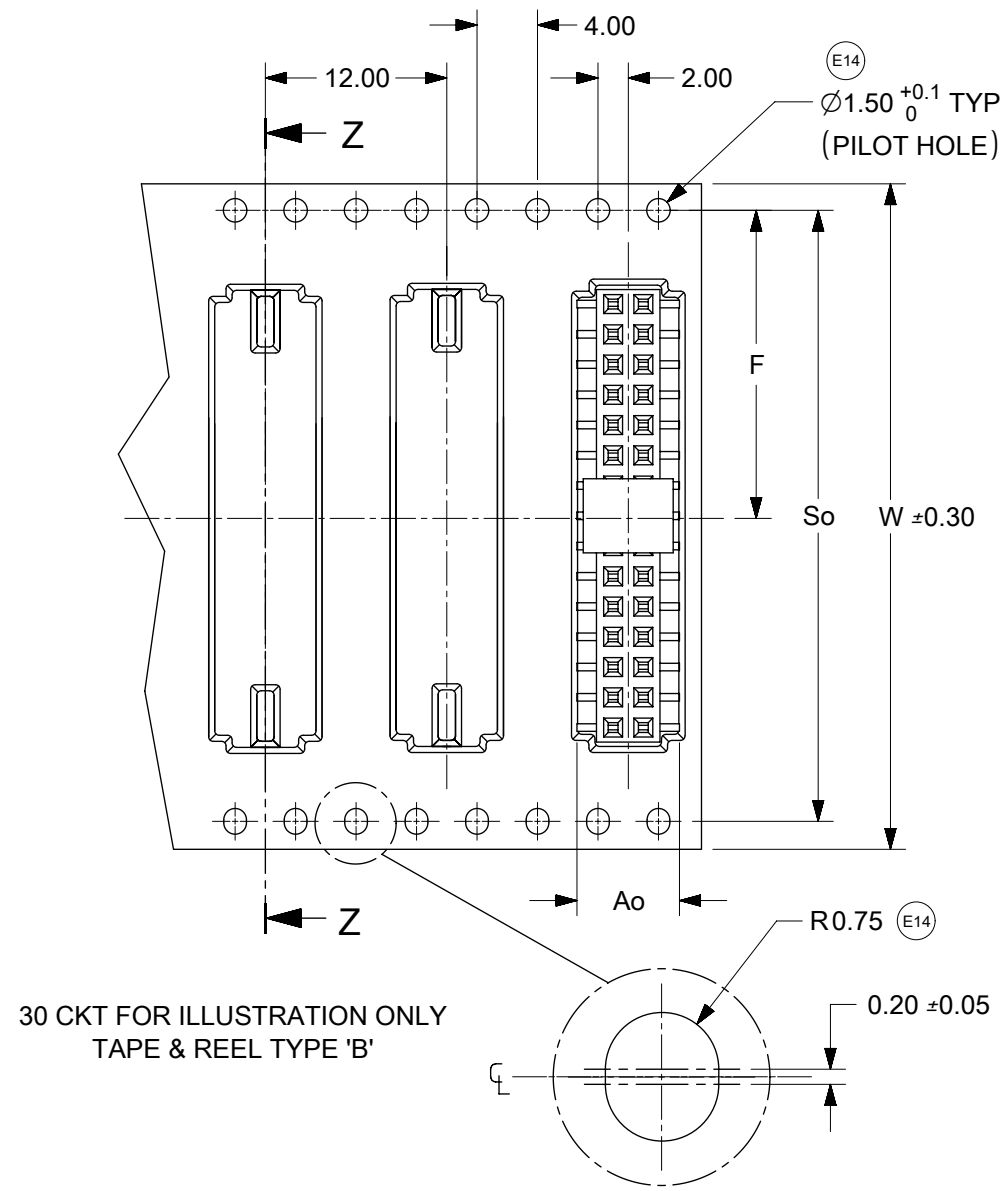
PART NUMBER W/CAP IN TUBE	CKT. SIZE	⊕ ^{E14} DIM A	⊕ ^{E14} DIM B	DIM C
87381-06**	6	6.00	4.00	0.55
87381-08**	8	8.00	6.00	1.55
87381-10**	10	10.00	8.00	2.55
87381-12**	12	12.00	10.00	3.55
87381-14**	14	14.00	12.00	4.55
87381-16**	16	16.00	14.00	5.55
87381-18**	18	18.00	16.00	6.55
87381-20**	20	20.00	18.00	7.55
87381-22**	22	22.00	20.00	8.55
87381-24**	24	24.00	22.00	9.55
87381-26**	26	26.00	24.00	10.55
87381-28**	28	28.00	26.00	11.55
87381-30**	30	30.00	28.00	12.55
87381-32**	32	32.00	30.00	13.55
87381-34**	34	34.00	32.00	14.55
87381-36**	36	36.00	34.00	15.55
87381-38**	38	38.00	36.00	16.55
87381-40**	40	40.00	38.00	17.55
87381-42**	42	42.00	40.00	18.55
87381-44**	44	44.00	42.00	19.55
87381-46**	46	46.00	44.00	20.55
87381-48**	48	48.00	46.00	21.55
87381-50**	50	50.00	48.00	22.55

- NOTES:
- PLATING FINISH:
 - 3 - 0.76μm MIN. GOLD IN CONTACT AREA 1.27μm MIN. TIN IN SOLDER TAIL AREA BOTH OVER 1.27μm MIN. NICKEL OVERALL
 - 4 - 0.38μm MIN. GOLD IN CONTACT AREA 1.27μm MIN. TIN IN SOLDER TAIL AREA BOTH OVER 1.27μm MIN. NICKEL OVERALL
 - 5 - 0.05μm MIN. GOLD FLASH IN CONTACT AREA 1.90μm MIN. TIN IN SOLDER TAIL AREA BOTH OVER 1.27μm MIN. NICKEL OVERALL
 - 12 CKT SIZE SHOWN FOR ASSY ILLUSTRATION ONLY. (SEE CHART FOR ALL PART SIZES), 6 CKT & 30 CKT ILLUSTRATED FOR TAPE/REEL VERSION ON SHT 2.
 - PRODUCT SPECIFICATION PS-87380 APPLIES.
 - COPLANARITY OF SOLDER TAILS ARE TO BE MEASURED BY RESTING THE PART ON A FLAT GAUGE SURFACE ↑ +0.05 UPWARDS AND ↓ -0.05 DOWNWARDS.
 - TUBE PACKAGING STANDARD.
 - COVER IS OPTIONAL, SEE LEGEND.
 - PARTS SHALL BE PACKED IN MOISTURE BARRIER BAG.
 - REFER SHT 3 FOR P/N: 87381-6000 T&R ILLUSTRATION.

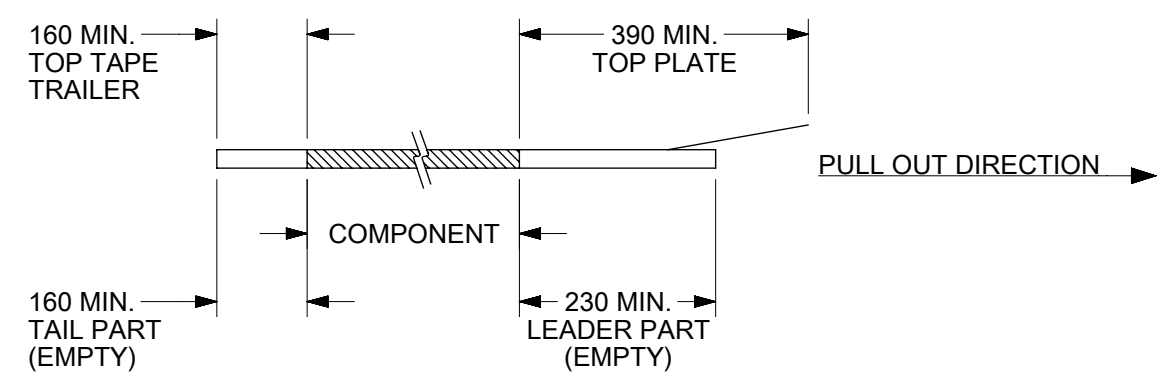


THIS DRAWING CONTAINS INFORMATION THAT IS PROPRIETARY TO MOLEX ELECTRONIC TECHNOLOGIES, LLC AND SHOULD NOT BE USED WITHOUT WRITTEN PERMISSION

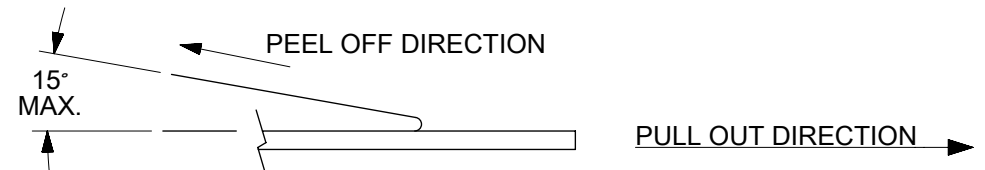
DIMENSION UNITS	SCALE	CURRENT REV DESC: ADDED PRT NO.	molex		
mm	NTS				
GENERAL TOLERANCES (UNLESS SPECIFIED)			MGRID, TOP ENTRY RECEPT. 4.50MM HT., SMT		
			PRODUCT CUSTOMER DRAWING		
4 PLACES ±			DOCUMENT NUMBER		
3 PLACES ±			SD-87381-XX6X		
2 PLACES ± 0.2			DOC TYPE		
1 PLACE ±			PSD		
0 PLACES ±			DOC PART		
ANGULAR TOL ± 3.0°			001		
DRAFT WHERE APPLICABLE MUST REMAIN WITHIN DIMENSIONS			REVISION		
THIRD ANGLE PROJECTION			E14		
DRAWING			SHEET NUMBER		
A3-SIZE			1 OF 4		
SERIES			MATERIAL NUMBER		
87381			SEE CHART		
CUSTOMER			GENERAL MARKET		



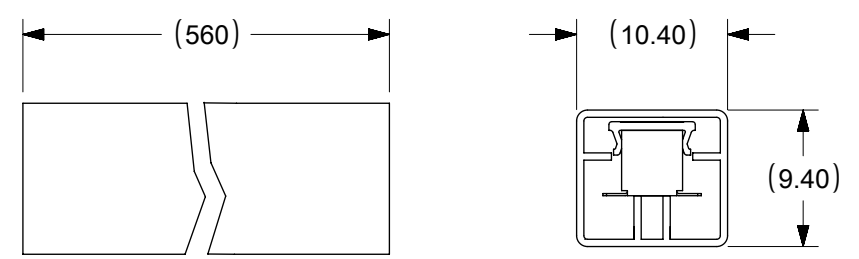
NOTES:
1. LEADER AND TRAILER TAPE



2. PEELING OFF FORCE OF THE TOP TAPE: 20-80gf.
(PEELING DIRECTION AS SHOWN IN FOLLOWING FIGURE)



3. PACKAGING STANDARD IS AS PER EIA-481.
4. TAPE & REEL QUANTITY = SEE TABLE



THIS DRAWING CONTAINS INFORMATION THAT IS PROPRIETARY TO MOLEX ELECTRONIC TECHNOLOGIES, LLC AND SHOULD NOT BE USED WITHOUT WRITTEN PERMISSION											
DIMENSION UNITS		SCALE		CURRENT REV DESC: ADDED PRT NO.						molex	
mm		NTS									
GENERAL TOLERANCES (UNLESS SPECIFIED)											
		MM		INCH		EC NO: 606422		MGRID, TOP ENTRY RECEPT. 4.50MM HT., SMT			
4 PLACES		±		±		DRWN: GGUNAGI 2018/04/27		PRODUCT CUSTOMER DRAWING			
3 PLACES		±		±		CHK'D: GJEEVANSURES 2018/10/23		DOCUMENT NUMBER		DOC TYPE DOC PART REVISION	
2 PLACES		± 0.2		±		APPR: ISHWARG 2018/10/23		SD-87381-XX6X		PSD 001 E14	
1 PLACE		±		±		INITIAL REVISION:		MATERIAL NUMBER		CUSTOMER	
0 PLACES		±		±		DRWN: JAMES 1998/01/08		SEE CHART		GENERAL MARKET	
ANGULAR TOL		± 3.0°		± 3.0°		APPR: SQUEK 1999/04/26		SERIES		SHEET NUMBER	
DRAFT WHERE APPLICABLE MUST REMAIN WITHIN DIMENSIONS				THIRD ANGLE PROJECTION		DRAWING		87381		2 OF 4	

CKT SIZE	PART No. IN TUBE	PART NO. WITH CAP IN TAPE/REEL	W	So	ⓔ14 Ao	F	Bo	Ko	T & R QUANTITY PER REEL
6	87381-0664	87381-9002	24	-	7.00	11.50	6.50	5.30	500
8	87381-0864	87381-9003	24	-	7.00	11.50	8.50	5.30	600
10	87381-1064	87381-9005	24	-	7.00	11.50	10.50	5.30	680
12	87381-1264	ⓔ14 87381-9007	24	-	7.00	11.50	12.50	5.30	600
14	87381-1464	87381-9006	32	28.40	7.20	14.20	14.50	5.30	750
16	87381-1664	87381-9004	32	28.40	7.20	14.20	16.50	5.30	800
18	87381-1864	87381-1800	32	28.40	7.20	14.20	18.50	5.30	750
20	87381-2063	87381-2000	32	28.40	7.20	14.20	20.50	5.30	800
22	87381-2264	87381-2200	44	40.40	7.20	20.20	22.50	5.30	500
30	87381-3064	87381-3000	44	40.40	7.20	20.20	30.50	5.30	500
32	87381-3264	87381-3200	44	40.40	7.20	20.20	32.50	5.30	ⓔ14 500
34	87381-3464	87381-3400	56	52.40	7.20	26.20	34.50	5.30	500
40	87381-4063	-	56	52.40	8.40	26.20	40.40	5.60	ⓔ13 750
40	-	87381-4000	56	52.40	8.40	26.20	40.40	5.60	400
44	87381-4464	87381-4400	56	52.40	7.20	26.20	44.50	5.30	500
46	87381-4664	87381-4600	72	68.40	7.20	34.20	46.50	5.30	750
50	87381-5063	87381-5030	72	68.40	7.20	34.20	50.50	5.30	500
50	87381-5064	87381-5000	72	68.40	7.20	34.20	50.50	5.30	500

THIS DRAWING CONTAINS INFORMATION THAT IS PROPRIETARY TO MOLEX ELECTRONIC TECHNOLOGIES, LLC AND SHOULD NOT BE USED WITHOUT WRITTEN PERMISSION

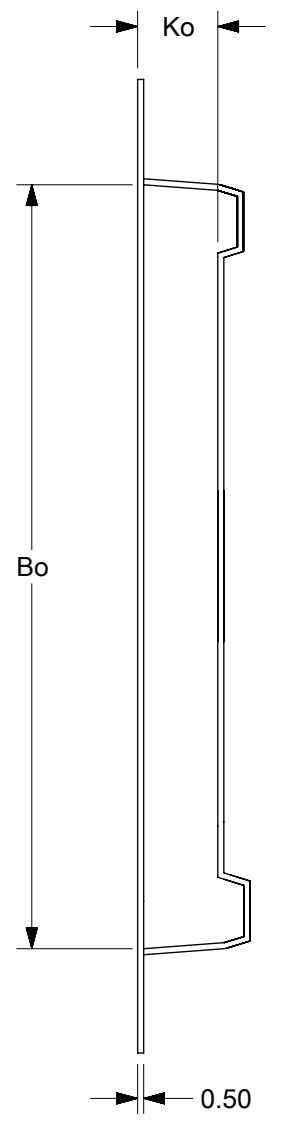
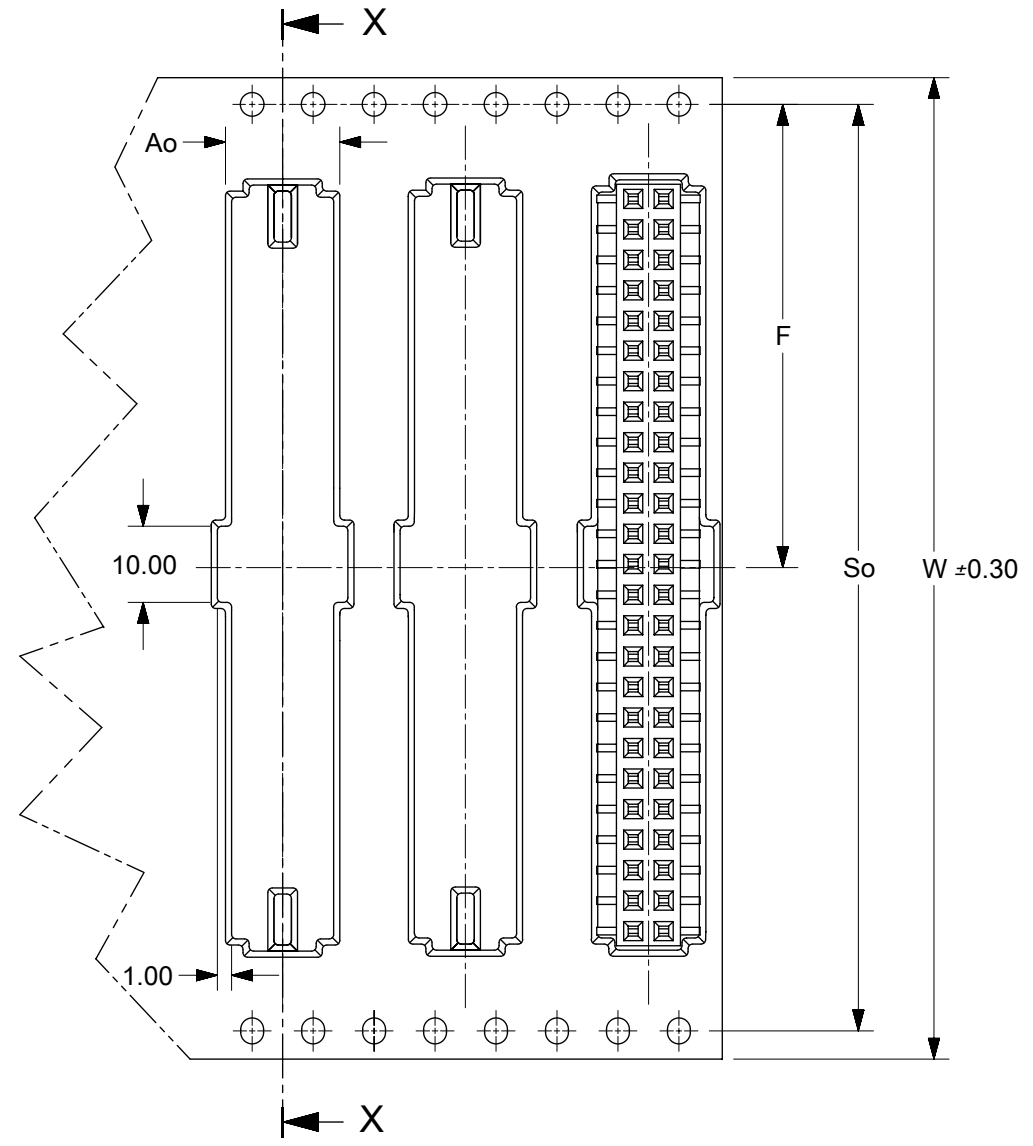
DIMENSION UNITS	SCALE	CURRENT REV DESC: ADDED PRT NO.		molex	
mm	NTS				
GENERAL TOLERANCES (UNLESS SPECIFIED)		EC NO: 606422		MGRID, TOP ENTRY RECEPT. 4.50MM HT., SMT	
4 PLACES	±	DRWN: GGUNAGI	2018/04/27		
3 PLACES	±	CHK'D: GJEEVANSURES	2018/10/23		
2 PLACES	± 0.2	APPR: ISHWARG	2018/10/23	PRODUCT CUSTOMER DRAWING	
1 PLACE	±	INITIAL REVISION:		DOCUMENT NUMBER	
0 PLACES	±	DRWN: JAMES	1998/01/08	SD-87381-XX6X	
ANGULAR TOL	± 3.0°	APPR: SQUEK	1999/04/26	DOC TYPE	DOC PART
DRAFT WHERE APPLICABLE MUST REMAIN WITHIN DIMENSIONS		THIRD ANGLE PROJECTION	DRAWING	SERIES	MATERIAL NUMBER
			A3-SIZE	87381	CUSTOMER
				SEE CHART	GENERAL MARKET
					SHEET NUMBER
					3 OF 4

DOCUMENT STATUS	P1	RELEASE DATE	2018/10/23	11:53:28
-----------------	----	--------------	------------	----------

9 8 7 6 5 4 3 2 1

CKT SIZE	PART No. WITHOUT CAP IN TUBE	PART NO. WITHOUT CAP IN TAPE / REEL	W	So	Ao	F	Bo	Ko	T & R TYPE (SHT 2)	T&R QTY PER REEL
50	87381-5074	87381-6000 \triangle_8	72	68.40	6.80	34.20	50.50	8.00	B	500

\triangle_8 ILLUSTRATION FOR P/N: 87381-6000
50 CKT IN T&R W/O CAP



SECTION X-X

THIS DRAWING CONTAINS INFORMATION THAT IS PROPRIETARY TO MOLEX ELECTRONIC TECHNOLOGIES, LLC AND SHOULD NOT BE USED WITHOUT WRITTEN PERMISSION											
DIMENSION UNITS		SCALE		CURRENT REV DESC: ADDED PRT NO.							
mm		NTS									
GENERAL TOLERANCES (UNLESS SPECIFIED)				EC NO: 606422				MGRID, TOP ENTRY RECEPT. 4.50MM HT., SMT			
				DRWN: GGUNAGI 2018/04/27							
				CHK'D: GJEEVANSURES 2018/10/23				PRODUCT CUSTOMER DRAWING			
				APPR: ISHWARG 2018/10/23							
				INITIAL REVISION:				DOCUMENT NUMBER			
4 PLACES ±				DRWN: JAMES 1998/01/08				SD-87381-XX6X			
3 PLACES ±				APPR: SQUEK 1999/04/26				PSD 001 E14			
2 PLACES ± 0.2								DOC TYPE DOC PART REVISION			
1 PLACE ±											
0 PLACES ±											
ANGULAR TOL ± 3.0°											
DRAFT WHERE APPLICABLE MUST REMAIN WITHIN DIMENSIONS				THIRD ANGLE PROJECTION		DRAWING		SERIES		MATERIAL NUMBER	
						A3-SIZE		87381		SEE CHART	
								CUSTOMER		SHEET NUMBER	
								GENERAL MARKET		4 OF 4	

DOCUMENT STATUS	P1	RELEASE DATE	2018/10/23	11:53:28
-----------------	----	--------------	------------	----------

9 8 7 6 5 4 3 2 1