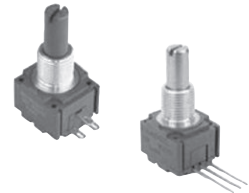


BOURNS Panel Controls



MODEL 91, 92, AND 95 LONG LIFE SERIES: SLOTTED LINEAR PANEL CONTROLS

- Features:**
- Virtually infinite electrical circuit isolation
 - Extended rotational life
 - Panel mount
 - Conductive plastic element type
- Specifications:**
- Operating Temperature Range: -40°C to +125°C
 - Number of Turns: 1
 - Operational Life: 1,000,000 Cycles
 - Power Rating: 1W
 - Resistance: 10kΩ
 - Temperature coefficient: 1000PPM/°C
 - Tolerance: 10%

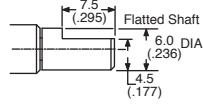


MOUSER STOCK NO.	Bourns Part No.	Shaft Diameter	Shaft Length	Termination Style	Price Each					
					1	10	25	50	100	500
652-91A1A-G28-L15L	91A1A-G28-L15L	0.249 in	7/8 in	PC Pin	11.09	10.70	9.12	8.72	7.92	6.14
652-92R1A-J22-L15L	92R1A-J22-L15L	6 mm	22 mm	J-Hook	13.08	12.08	11.10	10.06	9.06	7.55
652-95C1D-E24-L15L	95C1D-E24-L15L	0.125 in	3/4 in	Solder Lug	15.29	14.12	12.98	11.76	10.59	8.82

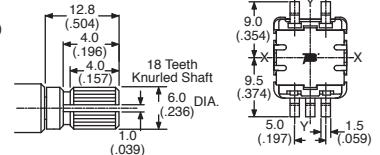
For quantities greater than listed, call for quote.

PRS11S SERIES: 11MM SMD LINEAR PANEL CONTROLS

- Features:**
- Carbon element
 - Infrared or hot air reflow compatible
- Specifications:**
- Operating temp.: -10°C to +70°C
 - Power rating: audio 0.025 watts
 - Rotational life: 15,000 cycles



DIMENSIONS: mm (in.)



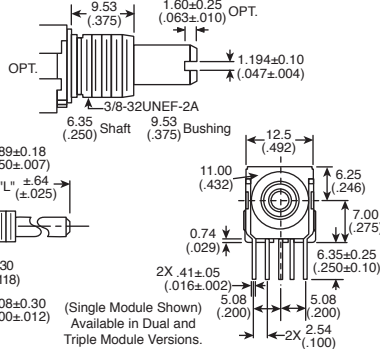
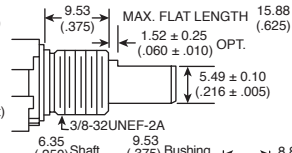
MOUSER STOCK NO.	Bourns Part No.	Value (Ω)	Shaft Type	Shaft Length (mm)	Price Each				
					1	10	50	100	500
652-PRS11SN20K103B1	PRS11S-N20K-103B1	10K	Knurled	20	4.00	3.50	2.94	2.75	2.25
652-PRS11SN20F503B1	PRS11S-N20K-503B1	50K	Knurled	20	3.65	3.20	2.68	2.51	2.06
652-PRS11SN20F503B1	PRS11S-N20F-503B1	50K	Flatted	20	3.65	3.20	2.68	2.51	2.06

For quantities greater than listed, call for quote.

51/53 SERIES: 1/2" PANEL CONTROLS

- Features:**
- Metal bushing and shaft
 - Conductive plastic or cermet elements available
 - Single turn
 - Sealed to IP65
 - Nut and washer included
- Specifications:**
- Power Rating: 0.5W (CP); 1.0W (Cermet)
 - Rotational Life (No Load): 50K cycles (CP); 25K cycles (Cermet)
 - Temperature Coefficient: ±1000 PPM/°C (CP); ±150 PPM/°C (Cermet)
 - Operating Temperature: +1°C to +125°C

DIMENSIONS: mm (in.)



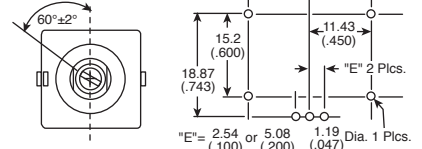
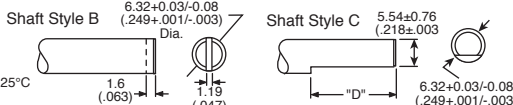
MOUSER STOCK NO.	Bourns Part No.	Value (Ω)	Taper		Element Type	Price Each				
			Type	Tol.		1	10	25	50	100
652-51AAA-B24-A13L	51AAA-B24-A13L	5K	Linear	10%	Cermet	9.30	8.97	7.65	7.31	6.64
652-51AAA-B24-B10L	51AAA-B24-B10L	1K	Linear	20%	CP	9.11	7.97	7.80	6.82	6.18
652-51AAA-B28-B15L	51AAA-B28-B15L	10K	Linear	20%	CP	9.11	7.97	7.80	6.82	6.18
652-51AAA-B24-B18L	51AAA-B24-B18L	50K	Linear	20%	CP	9.10	7.96	7.80	6.82	6.17
652-53ABDA28B25/B25L	53ABD-A28-B25/B25L	1M	Linear	20%	CP	13.60	11.89	11.65	10.20	9.22
652-51AAA-B24-D10L	51AAA-B24-D10L	1K	Audio	20%	CP	9.30	8.97	7.65	7.31	6.64
652-51AAA-B28-D15L	51AAA-B28-D15L	10K	Audio	20%	CP	9.41	9.08	7.74	7.40	6.72

For quantities greater than listed, call for quote.

PC SERIES: "SLIMLINE" 22MM PANEL CONTROLS

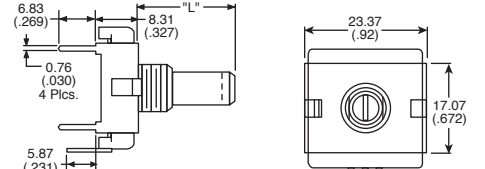
- Features:**
- Space saving low profile design
 - Plastic shaft and bushing
 - Mounting bracket
 - Long life
- Specifications:**
- Power Rating: 0.75W
 - Rotational Life: 50K cycles
 - Resistance Tolerance: ±20%
 - Operating Temperature: +1°C to +125°C

DIMENSIONS: mm (in.)



MOUSER STOCK NO.	Bourns Part No.	Value (Ω)	Shaft Type	Price Each			
				1	10	50	100
652-PCW1JC24BAB502L	PCW1J-C24-BAB502L	5K	Flatted	4.89	4.08	3.59	3.26
652-PCW1JC24BAB103L	PCW1J-C24-BAB103L	10K	Flatted	4.89	4.08	3.59	3.26
652-PCW1JC24BAB503L	PCW1J-C24-BAB503L	50K	Flatted	4.75	3.96	3.49	3.17
652-PCW1JC24BAB104L	PCW1J-C24-BAB104L	100K	Flatted	4.89	4.08	3.59	3.26
652-PCW1JB24BAB502L	PCW1J-B24-BAB502L	5K	Slotted	4.86	4.46	3.73	3.41
652-PCW1JB24-BAB103L	PCW1J-B24-BAB103L	10K	Slotted	4.89	4.08	3.59	3.26
652-PCW1JB24-BAB503L	PCW1J-B24-BAB503L	50K	Slotted	4.86	4.46	3.73	3.41

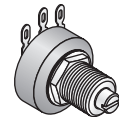
For quantities greater than listed, call for quote.



3852 SERIES: 3/4" PANEL CONTROLS

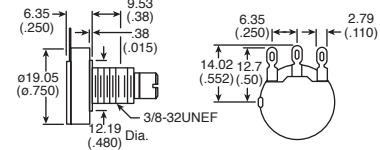
- Features:**
- Single-turn
 - Linear taper
 - Cermet element
 - Nut and washer included
 - Minimal depth package
 - Tolerance: ±10%
 - Power rating: 2 Watts @ +70°C
 - Operating temperature: -1°C to +125°C
 - Rotational life: 50,000 cycles

DIMENSIONS: mm (in.)



MOUSER STOCK NO.	Bourns Part No.	Value (Ω)	Shaft Diameter (in.)	Shaft Length (in.)	Price Each					
					1	10	25	50	100	250
652-3852A-162-102AL	3852A-162-102AL	1K	1/4	1/2	10.56	10.18	8.69	8.30	7.54	6.04
652-3852A-162-502AL	3852A-162-502AL	5K	1/4	1/2	10.56	10.18	8.68	8.30	7.54	6.04
652-3852A-162-103AL	3852A-162-103AL	10K	1/4	1/2	10.56	10.18	8.69	8.30	7.54	6.04
652-3852A-162-503AL	3852A-162-503AL	50K	1/4	1/2	10.56	10.18	8.69	8.30	7.54	6.04
652-3852A-162-104AL	3852A-162-104AL	100K	1/4	1/2	10.56	10.18	8.69	8.30	7.54	6.04
652-3852A-282-102AL	3852A-282-102AL	1K	1/4	7/8	10.56	10.18	8.69	8.30	7.54	6.04
652-3852A-282-502AL	3852A-282-502AL	5K	1/4	7/8	10.56	10.18	8.69	8.30	7.54	6.04
652-3852A-282-103AL	3852A-282-103AL	10K	1/4	7/8	10.56	10.18	8.69	8.30	7.54	6.04
652-3852A-282-503AL	3852A-282-503AL	50K	1/4	7/8	10.56	10.18	8.69	8.30	7.54	6.04
652-3852A-282-104AL	3852A-282-104AL	100K	1/4	7/8	10.56	10.18	9.23	8.30	7.54	6.04

For quantities greater than listed, call for quote.



3310 SERIES: 9MM SQUARE SEALED PANEL CONTROLS

- Features:**
- Conductive plastic
 - PC board and bushing mount
 - Plastic or metal bushing and plastic shaft
 - Withstands typical industrial washing
 - Compact package saves board and panel
 - Tolerance: 20%
 - Temperature Coefficient: 1000 PPM/°C
 - Element Type: Conductive Plastic
 - Shaft Type: Slotted
 - Operating Temperature Range: -40°C to +125°C

For quantities greater than listed, call for quote.

MOUSER STOCK NO.	Bourns Part No.	Value (Ω)	Power Rating	Taper	Price Each						
					1	10	25	50	100	500	
Single Cup											
652-3310C-002-103L	3310C-002-103L	10K	250 mW (1/4 W)	Linear	3.56	2.78	-	2.62	2.40	1.97	
Dual Cup											
652-3310H-026-103L	3310H-026-103L	10K	250 mW (1/4 W)	Linear	7.26	6.35	6.22	5.44	4.92	4.01	
652-3310H-004-502L	3310H-004-502L	5K	250 mW (1/4 W)	Linear	7.74	6.77	6.63	5.80	5.25	4.28	

