

2N3055 NPN  
MJ2955 PNP

**COMPLEMENTARY  
SILICON POWER TRANSISTORS**



**TO-3 CASE**



www.centrasemi.com

**DESCRIPTION:**

The CENTRAL SEMICONDUCTOR 2N3055 and MJ2955 are complementary silicon power transistors manufactured by the epitaxial base process, mounted in a hermetically sealed metal case, designed for general purpose switching and amplifier applications.

**MARKING: FULL PART NUMBER**

**MAXIMUM RATINGS:** ( $T_C=25^\circ\text{C}$ )

Collector-Base Voltage

Collector-Emitter Voltage

Collector-Emitter Voltage

Emitter-Base Voltage

Continuous Collector Current

Continuous Base Current

Power Dissipation

Operating and Storage Junction Temperature

Thermal Resistance

**SYMBOL**

$V_{CB0}$  100

$V_{CER}$  70

$V_{CEO}$  60

$V_{EBO}$  7.0

$I_C$  15

$I_B$  7.0

$P_D$  115

$T_J, T_{stg}$  -65 to +200

$\Theta_{JC}$  1.52

**UNITS**

V

V

V

V

A

A

W

$^\circ\text{C}$

$^\circ\text{C/W}$

**ELECTRICAL CHARACTERISTICS:** ( $T_C=25^\circ\text{C}$  unless otherwise noted)

SYMBOL	TEST CONDITIONS	MIN	MAX	UNITS
$I_{CEV}$	$V_{CE}=100\text{V}, V_{EB}=1.5\text{V}$		1.0	mA
$I_{CEV}$	$V_{CE}=100\text{V}, V_{EB}=1.5\text{V}, T_C=150^\circ\text{C}$		5.0	mA
$I_{CEO}$	$V_{CE}=30\text{V}$		0.7	mA
$I_{EBO}$	$V_{EB}=7.0\text{V}$		5.0	mA
$BV_{CEO}$	$I_C=200\text{mA}$	60		V
$BV_{CER}$	$I_C=200\text{mA}, R_{BE}=100\Omega$	70		V
$V_{CE(SAT)}$	$I_C=4.0\text{A}, I_B=400\text{mA}$		1.1	V
$V_{CE(SAT)}$	$I_C=10\text{A}, I_B=3.3\text{A}$		3.0	V
$V_{BE(ON)}$	$V_{CE}=4.0\text{V}, I_C=4.0\text{A}$		1.5	V
$h_{FE}$	$V_{CE}=4.0\text{V}, I_C=4.0\text{A}$	20	70	
$h_{FE}$	$V_{CE}=4.0\text{V}, I_C=10\text{A}$	5.0		
$h_{fe}$	$V_{CE}=4.0\text{V}, I_C=1.0\text{A}, f=1.0\text{kHz}$	15	120	
$f_T$	$V_{CE}=10\text{V}, I_C=0.5\text{A}, f=1.0\text{MHz}$	2.5		MHz
$f_{hfe}$	$V_{CE}=4.0\text{V}, I_C=1.0\text{A}, f=1.0\text{kHz}$	10		kHz
$I_{s/b}$	$V_{CE}=40\text{V}, t=1.0\text{s}$	2.87		A

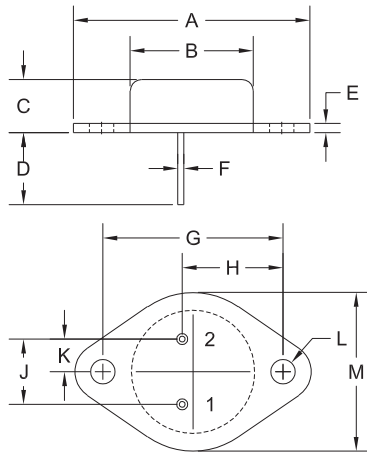
R1 (26-July 2013)

2N3055 NPN  
MJ2955 PNP

COMPLEMENTARY  
SILICON POWER TRANSISTORS



TO-3 CASE - MECHANICAL OUTLINE



R2

SYMBOL	DIMENSIONS			
	INCHES		MILLIMETERS	
	MIN	MAX	MIN	MAX
A	1.516	1.573	38.50	39.96
B (DIA)	0.748	0.875	19.00	22.23
C	0.250	0.450	6.35	11.43
D	0.433	0.516	11.00	13.10
E	0.054	0.065	1.38	1.65
F	0.035	0.045	0.90	1.15
G	1.177	1.197	29.90	30.40
H	0.650	0.681	16.50	17.30
J	0.420	0.440	10.67	11.18
K	0.205	0.225	5.21	5.72
L (DIA)	0.151	0.172	3.84	4.36
M	0.984	1.050	25.00	26.67

TO-3 (REV: R2)

LEAD CODE:

- 1) Base
- 2) Emitter
- Case) Collector

MARKING:

FULL PART NUMBER

R1 (26-July 2013)