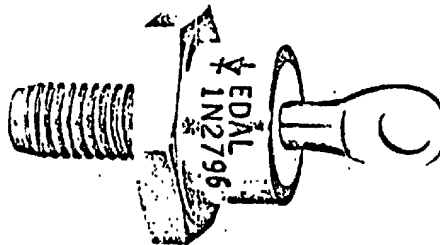
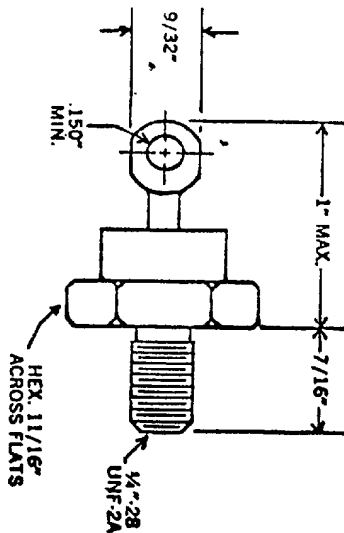


T-01-19



B_v _____

PIV See Table _____

I_o 35 A @ 140 °C Case

I_s 500 AMPS

V_f 1.7 v @ 35A @ 140 °C Case

I_r 10 mA @ PIV @ 140 °C Case

2 mA @ PIV @ 25 °C

STYLE DO-5

STAMP Edal P/N

EQUIV. TO _____ **EXCEPT** _____

P/N	PIV (VOLTS)
1N1183	50
1N1184	100
1N1185	150
1N1186	200
1N1187	300
1N1188	400
1N1189	500
1N1190	600

Note: Add R after P/N to denote reverse polarity

REV.	DESCRIPTION	BY	DATE

EDAL INDUSTRIES INC. EAST HAVEN, CONN. 06512		DRAWN	APP	DATE
		DV	<i>[Signature]</i>	6/2/72
TOLERANCES UNLESS OTHERWISE NOTED				
TITLE		FRACTIONS ± DECIMALS ±		
SILICON RECTIFIER		DWG. NO.		
		1N1183 - 1N1190		

9000-4149